

Bestop®

**SOFT TOPS AND
OFF-ROAD ACCESSORIES**



WRANGLER JK



IDEAS never get stuck in neutral. From the sewing machine inside our small upholstery shop 65 years ago, innovations have run wild and free into the wilderness. We're always discovering.

Today we stand proud as the exclusive supplier of soft tops to Jeep – a 35-year legacy still going strong.

TABLE OF CONTENTS

NEW PRODUCTS 3

SOFT TOPS 4-22

| | |
|---------------------------------------|-------|
| Soft Top Fabric Comparison..... | 4 |
| Find the Right Top for your Jeep..... | 5 |
| Sunrider® for Hardtop..... | 6 |
| eTop..... | 7 |
| Supertop® Ultra | 8-9 |
| Trektop Glide..... | 10-11 |
| Trektop™ | 12-13 |
| The Ascent..... | 14-15 |
| Supertop..... | 16-17 |
| Trektop Pro | 18 |
| Halftop..... | 19 |
| Jeep Licensed Soft Tops..... | 20-21 |
| Sailcloth Replace-A-Top | 22 |

BIKINI TOPS..... 23-24

| | |
|---------------------------------|----|
| Sunscreen | 23 |
| Sun Bikini® Top | 23 |
| Header & Strapless Bikini®..... | 24 |

FABRIC ACCESSORIES 24-26

| | |
|--------------------------------------|----|
| Duster™ Deck Covers..... | 24 |
| Windjammers™ | 25 |
| Soundbar Cap | 25 |
| Tinted Replacement Window Kits | 26 |

HARDWARE..... 26-27

| | |
|--|----|
| Quick Release Bow Knuckles..... | 26 |
| Tailgate Bar Kit | 26 |
| Factory Style Replacement Header Assembly..... | 27 |
| Windshield Channels..... | 27 |

| | |
|---|----|
| Door Surrounds | 27 |
| Factory Style Bow Kits & Snap Repair Kit..... | 27 |

DOORS & DOOR HARDWARE..... 28-29

| | |
|---------------------------------------|----|
| Element Doors & Enclosure Kits..... | 28 |
| Element Door Uppers..... | 28 |
| 2-Piece Doors & Lower Half Doors..... | 29 |
| Mirror Mounting Cups..... | 29 |
| Replacement Mirrors | 29 |

STORAGE & SECURITY..... 30-35

| | |
|---|----|
| Lock Boxes | 30 |
| Tailgate Shelf..... | 31 |
| Seat Back Organizer | 31 |
| RoughRider® Tire, Under Seat & Tailgate Organizers..... | 32 |
| Trunk Organizer & Saddle Bag | 33 |
| Instatrunk..... | 33 |
| Sport Bar Cover | 33 |
| All-Weather Trail Covers..... | 34 |
| Window Storage Bag | 35 |
| HOSS™ Hard Top Hoist & Window Storage Duffel..... | 35 |

SEAT COVERS & FLOOR LINERS 36

| | |
|----------------------------|----|
| Seat Covers | 36 |
| Floor & Cargo Liners | 36 |

ACCESSORIES 37

| | |
|----------------------------|----|
| Fabric Care Products | 37 |
|----------------------------|----|

FABRIC SWATCH GUIDE 37

BESTOP® FAMILY BRANDS..... 38

JOBBER NETWORK 39

NEW PRODUCTS



eTop POWERED CONVERTIBLE TOP

- Inside, the super-suede headliner provides top-notch sound insulation, temperature control, and comfort
- Effortless operation requires only one person, just opening two latches and pressing a button
- Made from high-quality materials and custom-engineered to match the durability of your Wrangler

SEE PAGE 7



THE ASCENT

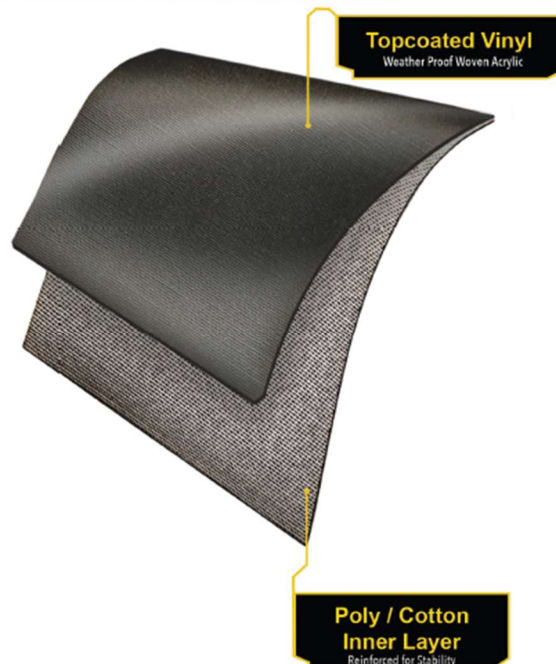
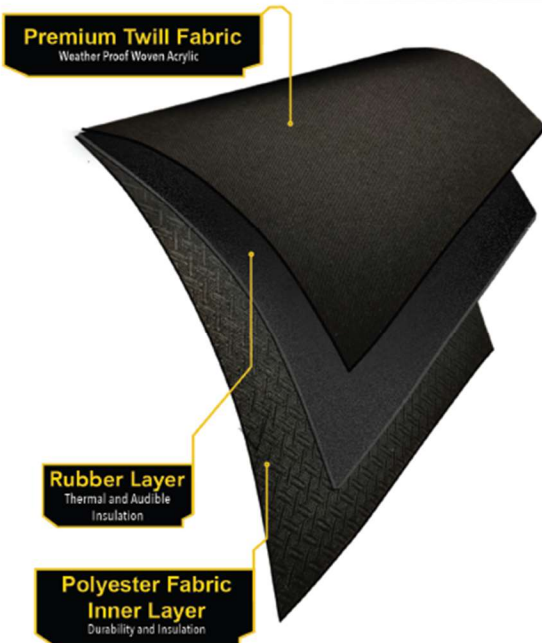
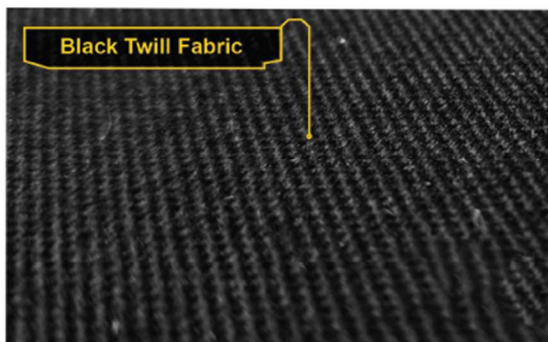
- Front row open air access with the flip back Sunrider feature
- Simple installation and removal for that seasonal top swapper
- Lightweight Black Diamond material for that classic soft top look
- Easily remove your windows for an open air Bikini experience
- Optional window storage bag 4281535
- Simple maintenance with our soft top care kit 1121500
- Easy to follow installation video

SEE PAGES 14-15



TOP MATERIAL COMPARISON

Deeper dive into our fabrics?
Premium Black Twill fabric offers year-round
installation and a classic look.



FIND THE PERFECT FIT WITH OUR WIDE VARIETY OF TOPS



SUPERTOP® ULTRA PAGE 8-9

- Innovative folding frame functions like a convertible top—just fold back for a total open-air ride experience
- Our premium, year-round, versatile top
- Fits 2007-2024 JKU 4 DR



TREKTOP™ GLIDE™ PAGE 10-11

- Innovative, patented new folding frame design functions like a convertible top—just fold back behind the rear seat for a total open-air ride
- Zipperless side & rear windows for easy installation/removal
- Fits 2007-2018 JK 2 door and JKU 4 door



ETOP PAGE 7

- Open up your JK with a powered convertible top at the press of a button without leaving the driver's seat
- Fully lined interior for better sound, heat and insulation
- eTops are made from high-quality materials and custom-engineered for your 2 or 4 door Wrangler JK



TREKTOP™ PAGE 12-13

- Run as fully-enclosed, all-season soft top or remove the windows and enjoy as a bikini
- Sunrider® feature allows the top to open from inside the vehicle
- Does Not Fully Retract
- Fits 2007-18 Wrangler JK



THE ASCENT PAGE 14-15

- Front row open air access with the flip back Sunrider panel
- Removable rear and side windows
- Black Diamond material for that classic soft top look
- Top does not fully retract
- Fits 2007-18 Jeep Wrangler JK 4-Door



SUPERTOP® PAGE 16-17

- Complete replacement soft top with upgraded features
- Fits 2007-18 JK and JK Unlimited



TREKTOP™ PRO PAGE 18

- Industry-first all-season soft top featuring glass windows and zipperless technology
- Bestop's Sunrider™ flip-back panel for open-air driving
- Does not fully retract
- Fits 2007-2018 JK 2 door and JKU 4 door



HALFTOP PAGE 19

- Give your Wrangler an all-new look by adding this conversion kit to an existing Trektop soft top or buy as a complete stand alone soft top.
- Fits 2007-18 JK and JK Unlimited



SAILCLOTH REPLACE-A-TOP™ PAGE 22

- Sailcloth fabric that uses your original factory hardware
- Fits 2007-18 JK and JK Unlimited

SUNRIDER® FOR HARDTOP



1. UNLATCH

When closed and latched, enjoy protection from the elements and bad weather

2. FLIP

Flip back or close from inside the cab

3. ENJOY

Completely folded back so you can just open up and breathe

SUNRIDER® FOR HARDTOP FOR WRANGLER JK

- All-purpose, all-weather, year-round replacement for bulky Freedom Panels
- Easy, no-drill installation. Includes all parts necessary for installation
- Unique folding design lets you flip the panel back for an open-sky ride right from your front seat, or simply pull it forward and latch to the windshield header just like the original panels
- Designed for ease-of-use and durability with OEM quality

⚠ California Proposition 65 Warning: Cancer and Reproductive Harm. www.P65Warnings.ca.gov

COMPATIBLE SUNSCREENS AND MESH BIKINIS AVAILABLE ON PAGES 23-24

| YEAR | MODEL | PART # | COLORS |
|---------|--|--------|--------|
| 2007-18 | Wrangler JK 2-Door & Wrangler 4-Door Unlimited | 52453 | 17, 35 |

Colors: 17-Black Twill, 35-Black Diamond. See page 37 for detailed color/fabric views.

eTop

The Powered Convertible Soft Top

Squareback Profile



eTop

Enjoy complete control of your ride at the press of a button—no compromises necessary! This fully convertible top delivers unmatched versatility—simply release two latches and tap to open or close effortlessly. Whether you're chasing sunsets, heading for a weekend escape, or just out for a drive, the eTop keeps you in control, rain or shine

- Opens and closes in just 18 seconds
- eTop features a super-suede headliner provides top-notch sound insulation, temperature control, and comfort
- The top is designed to be an all-weather top. It is triple insulated and is quieter and more insulated than the stock hardtop.
- The windows are tinted to 30%.
- Can be used with or without doors
- Can't be used with Roof Racks
- Fully lined interior for a finished look and superior insulation from sound and temperature

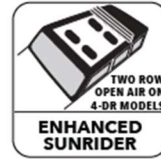
| YEAR | MODEL | PROFILE | PART # | COLORS |
|--|-------------------|------------|--------------|--------|
| 2007 - 2018 | JK Wrangler 2-Dr | Squareback | 94600 | 17 |
| 2007 - 2018 | JKU Wrangler 4-Dr | Squareback | 94500 | 17 |
| All part #'s include windows; made of vinyl specially for convertible tops in a thickness of .75 and .5mm. The windows are a 30% tint. | | | | |
| Colors: 17-Black Twill. See page 37 for detailed color/fabric views. | | | | |

SUPERTOP® ULTRA

Most Advanced Soft Top Technology for the Wrangler JK



FULLY CONVERTIBLE TOPS



Run it as a fully enclosed soft top, a Safari style bikini, the Sunrider open or fully open

SUPERTOP® ULTRA

- Our most premium, year-round versatile soft top
- Run it as a fully enclosed soft top, Safari style bikini, fully open, or with the Sunrider open.
- Supertop Ultra can be operated confidently whether you have a second set of hands or not, thanks to Bestop's patented Guide Track System assisting in guiding the hardware up or down
- Features traditional square-back profile consistent with traditional Jeep® silhouette
- Enhanced Sunrider® feature is simple to open thanks to gas strut assistance and lets in the sunshine over the front and most of the rear seats. Throw it open in a matter of seconds
- Combination of zippers and zipperless channels makes window install and removal seamless
- Folds compactly behind rear seat
- Made of high-grade premium fabric that maintains its shape in all temperatures, is mildew resistant, and contains UV inhibitors

Premium Twill

- 30-oz. triple-layer Premium Twill fabric has superior durability to other fabric used in Jeep soft tops
- Features smooth, wrinkle-resistant appearance and contains no PVCs
- More flexible with softer feel and superior cold-weather performance
- Industry-leading 40 mil, DOT-approved vinyl side and rear windows have 30% tint to help keep interior cooler in warm weather climates

California Proposition 65 Warning: Cancer and Reproductive Harm. www.P65Warnings.ca.gov



Combination of zippers and zipperless channels makes window install and removal seamless



Gas assist struts help in raising and lowering the top

| YEAR | MODEL | PART # | COLOR |
|---------|-----------------------|--------------|-------|
| 2007-18 | Wrangler JK 4-Door | 54724 | 17 |
| 2007-24 | JK Window Storage Bag | 42815 | 35 |

All models have 30% tinted windows, door surrounds, tailgate bar, removable DOT-approved windows, and sunroof feature. Doors not included. Premium Twill fabric has 40 mil thick windows.

Colors: 17-Black Twill, 35-Black Diamond. See page 37 for detailed color/fabric views.

TREKTOP™ GLIDE™



Includes all soft top fabric, window panels and simplified bows for a no-drill installation



Zipperless side and rear windows allow for easy installation or removal, just like the hybrid Trektop™ Pro soft top



New folding frame design lets the Trektop™ Glide™ fold back behind the rear seat for a total open-air ride or pull forward when you want full coverage

FULLY CONVERTIBLE TOPS



2016 Wrangler JK Unlimited
54923-17



2013 Wrangler JK 2-Door
54922-17



2013 Wrangler JK 2-Door
54922-17



2016 Wrangler JK Unlimited
54923-17



TREKTOP™ GLIDE™

- Inspired by the most popular soft top in the market since 2012, the Trektop™, the Trektop™ Glide™ brings together versatility, durability, and extreme ease of operation, plus several technologies exclusive to Bestop®. The result is a whole new level of performance and soft top enjoyment
- Innovative new folding frame design lets the Trektop™ Glide™ function like a convertible top—just fold back behind the rear seat for a total open-air ride. For full coverage, the Trektop™ Glide™ is fast and simple to close
- Premium Twill features 40 mil, DOT-approved vinyl side and rear windows have 30% tint to help keep interior cooler in warm weather
- JK Window Storage Bag 42815-35 available separately

- Zipperless side and rear panels allow for easy slide-in and slide-out, just like the ultra-premium Trektop™ Pro soft top
- Features the popular fastback look
- Built-in Sunrider® sunroof allows for open air driving and hardware is made of high strength steel and engineered thermoplastic polymer. 2-Door model only opens for the front seats.
- Includes all the soft top fabric, side and rear windows, door surrounds, tailgate bar, and all hardware for a no-drill installation
- Available in premium Twill or Black Diamond fabric

⚠ California Proposition 65 Warning: Cancer and Reproductive Harm. www.P65Warnings.ca.gov

| YEAR | MODEL | PART # | COLORS |
|---------|-----------------------|--------|--------|
| 2007-18 | Wrangler JK 2-Door | 54922 | 17, 35 |
| 2007-18 | Wrangler JK 4-Door | 54923 | 17, 35 |
| YEAR | ACCESSORY | PART # | COLOR |
| 2007-18 | JK Window Storage Bag | 42815 | 35 |

All models have 30% tinted windows, door surrounds, tailgate bar, removable DOT-approved windows, and sunroof feature. Doors not included. Black Diamond fabric has 30 mil thick windows. Premium Twill fabric has 40 mil thick windows.

Colors: 17-Black Twill, 35-Black Diamond. See page 37 for detailed color/fabric views.



Use of tailgate bar and clips allows hassle-free opening of tailgate



Zipperless technology used in key areas to improve fit and installation



OE style door surrounds allow easy installation and operation—all hardware included

TREKTOP™

- Run as fully-enclosed, all-season soft top or remove the sides and rear window and enjoy as a bikini (options for a variety of window configurations)
- New Sunrider® design allows the top to open from inside the vehicle with an unobstructed view
- Improved fabric positioning and tension with the Bestop® F.I.T. System (Fabric Install & Tensioning System) only on JK 4-door models
- Hybrid zipper/zipperless design utilizes patented zipperless technology to allow for easy removal of window panels and zippers on rear panel provide security and easy changes in configuration
- Kit includes: soft top fabric, patented factory-style door surrounds, tinted and replaceable windows, integrated header, tailgate bar, and Sunrider® feature
- Works with all factory full- and half-steel doors as well as Bestop® door kits (sold separately)
- JK Window Storage Bag 42815-35 available separately
- Tough, 28-oz multi-ply, premium grade Sailcloth material offers OEM quality noise reduction and insulation
- Tinted, removable 30 mil thick windows are DOT-approved
- Premium Twill fabric has superior durability and is featured on high-end sports and luxury cars
- Elegant, smooth and wrinkle-resistant fabric containing no PVCs, is easy to clean, and is more flexible with a softer feel and superior cold-weather performance than Sailcloth fabric
- Industry-leading 40 mil, DOT-approved vinyl side and rear windows have 30% tint to help keep interior cooler in warm weather
- Available in premium Twill or Black Diamond fabric



California Proposition 65 Warning: Cancer and Reproductive Harm. www.P65Warnings.ca.gov

TREKTOP™

OPEN AIR TOPS



2015 Wrangler JK Unlimited
56853-17



2017 Wrangler JK
2-Door 56852-17



| YEAR | WRANGLER JK MODELS | PART # | COLORS |
|---------|------------------------------|--------|--------|
| 2007-18 | Wrangler JK 2-Door | 56852 | 17, 35 |
| 2007-18 | Wrangler JK Unlimited 4-Door | 56853 | 17, 35 |
| YEAR | ACCESSORY | PART # | COLOR |
| 2007-18 | JK Window Storage Bag | 42815 | 35 |

All models have 30% tinted windows, door surrounds, tailgate bar, removable DOT-approved windows, and sunroof feature. Doors not included. Black Diamond fabric has 30 mil thick windows. Black Twill fabric has 40 mil thick windows.

Colors: 15- Black Denim, 17-Black Twill, 35-Black Diamond. See page 37 for detailed color/fabric views.



THE ASCENT

OPEN AIR TOPS



4-DOOR ONLY
FASTBACK
STYLING



BLACK DIAMOND
VINYL



FRONT
ROW OPEN AIR
SUNRIDER



4-6 HOUR
INSTALLATION



REMOVABLE
WINDOWS

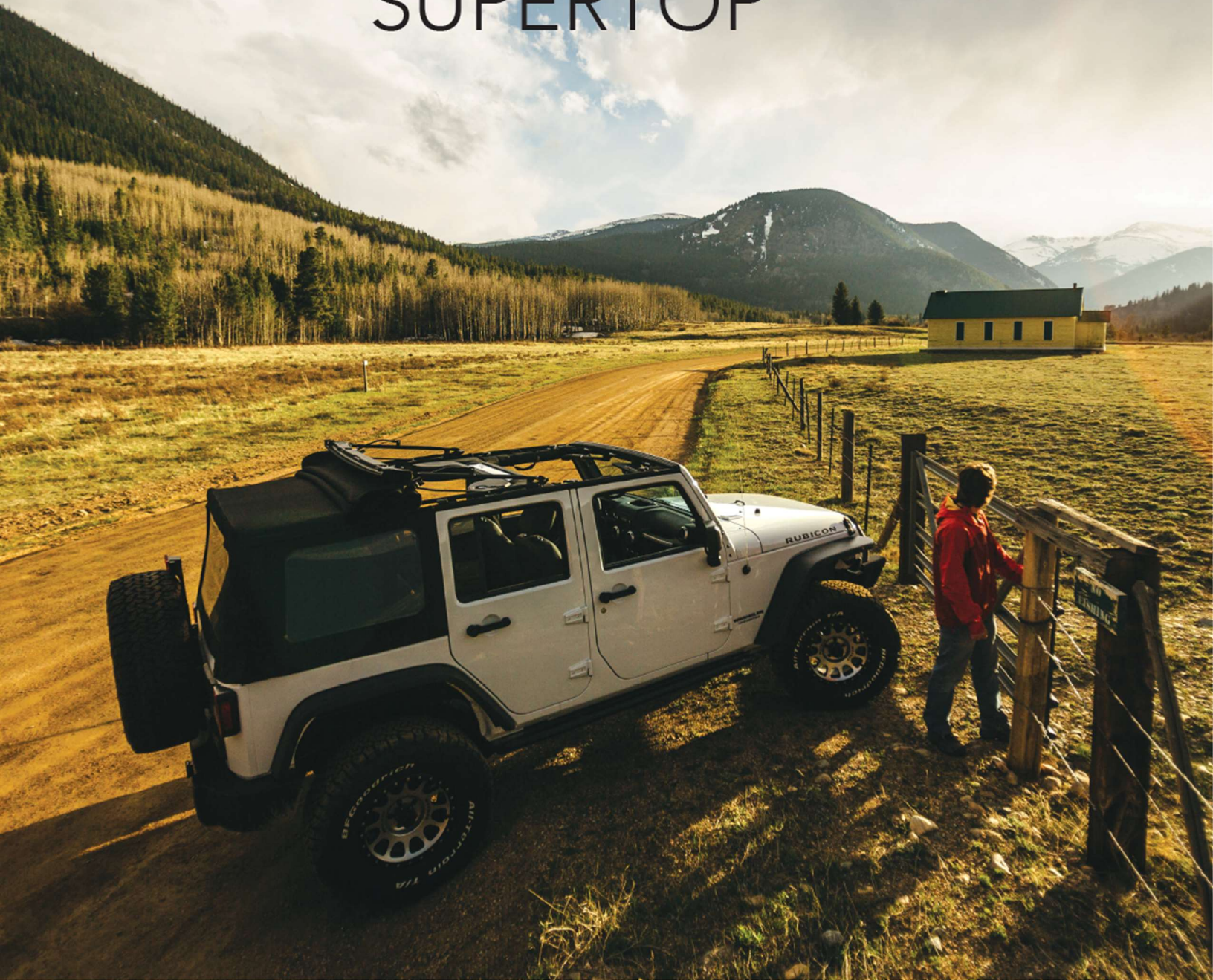


THE ASCENT

- Front row open air access with the flip back Sunrider panel
- Simple installation and removal for that seasonal top swapper or weekend top-off rider
- Lightweight Black Diamond material for that classic soft top look
- Easily remove your windows for an open air Bimini experience
- Optional window storage bag 4281535
- Simple maintenance with our soft top care kit 1121500
- Easy to follow installation video


| YEAR | MODEL | PART # | COLORS |
|---|-------------------|--------|--------|
| 2007-18 | Wrangler JKU 4-Dr | 56825 | 35 |
| All Part #'s include 30% tinted side and rear windows and are DOT-approved. Doors not included. Black Diamond fabric has 30 mil thick windows. | | | |
| Colors: 35-Black Diamond. See page 37 for detailed color/fabric views. | | | |

SUPERTOP



SUPERTOP®

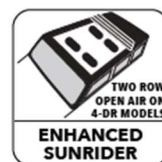
- Includes soft top fabric, side and rear windows, door surrounds, tailgate bar, and all hardware for installation
- Features Sunrider® sunroof for open-air driving. 2-door models only open for the front seats.
- Made of high-grade premium fabric that maintains its shape in all temperatures, is mildew-resistant, and contains UV inhibitors
- High strength steel and OEM-style thermoplastic polymer hardware
- Folds compactly behind rear seat for convertible top operation and function
- All models include quick-release bow knuckles that help easily remove the hardware from the vehicle
- Features Bestop's improved door surrounds similar to the OE style door surrounds
- Works with all Bestop door kits (sold separately) including 2-Piece Doors, Element Doors, and Lower Fabric Half doors
- 30-oz. triple-layer Premium Twill fabric has superior durability to other fabric used in Jeep soft tops
- Features smooth, wrinkle-resistant appearance and contains no PVCs
- More flexible with softer feel and superior cold-weather performance
- Industry-leading 40 mil, DOT-approved vinyl side and rear windows have 30% tint to help keep interior cooler in warm weather climates

 California Proposition 65 Warning: Cancer and Reproductive Harm. www.P65Warnings.ca.gov

OPEN AIR TOPS



2016 Wrangler JK
Unlimited
54823-17



2010 Wrangler JK
54822-17



2007 Wrangler JK Unlimited
54723-35



Removable and replaceable tinted windows with top-of-the-line YKK scoop count zippers



Patented door surrounds offer factory-exact fit and finish on Wrangler JK models



Easy access to "Open-Air" with the Sunrider feature



Adjustable bow system helps keep fabric taut and includes Bestop® quick-release bow knuckles

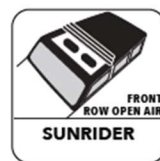
| YEAR | MODEL | PART # | COLORS |
|---------|------------------------------|--------|--------|
| 2007-18 | Wrangler JK 2-Door | 54722 | 35 |
| 2007-18 | Wrangler JK 2-Door | 54822 | 17 |
| 2007-18 | Wrangler JK 4-Door Unlimited | 54723 | 35 |
| 2007-18 | Wrangler JK 4-Door Unlimited | 54823 | 17 |

All Part #s include 30% tinted side and rear windows and are DOT-approved. Doors not included. Black Diamond fabric has 30 mil thick windows. Premium Twill fabric has 40 mil thick windows.

Colors: 17-Black Twill, 35-Black Diamond. See page 37 for detailed color/fabric views.

HYBRID CONVENIENCE TOPS

TREKTOP™ PRO



Rear glass hatch allows instant access to the cargo area



Defroster grid and connector



2016 Wrangler JK Unlimited
54863-17



Optional Wiper Motor Assembly



2013 Wrangler JK 2-Door
54862-17



2016 Wrangler JK 4-Door
54863-17

TREKTOP™ PRO

- Industry-first hard rear glass hatch allows for easy, one hand operation and accessibility to rear cargo area—no messing with zippers
- Let the sun in with Bestop's exclusive Sunrider® flip-back panel
- Allows easy install or removal of rear hatch and side window panels
- Side windows feature slider panels for extra ventilation in the back
- Easily converts into a Safari Bikini® Top for open-air driving
- Weighs less than a hard top, has all-season capability
- Rear glass hatch has gas assist strut and integrated defroster connect
- Your soft top just became your year-round solution. Add the wiper motor assembly to your Trektop Pro to clear away snow and rain with one swipe.
- JK Window Storage Bag 42815-35 available separately

⚠ California Proposition 65 Warning: Cancer and Reproductive Harm. www.P65Warnings.ca.gov

APPLICATIONS

| YEAR | MODEL | PART # | COLORS |
|---------|------------------------------|--------|--------|
| 2007-18 | Wrangler JK 2-Door | 54862 | 17 |
| 2007-18 | Wrangler JK 4-Door Unlimited | 54863 | 17 |

All models have 30% tinted windows, door surrounds, tailgate bar and sunroof feature. Doors not included.

ACCESSORIES

| YEAR | MODEL | PART # | COLOR |
|---------|--|--------|-------|
| 2007-18 | Defroster Harness for Trektop Pro | 54857 | 01 |
| 2007-18 | Rear Window Wiper Motor Assembly for Trektop Pro | 54858 | 01 |
| 2007-18 | Window Storage Portfolio Bag for Trektop Pro | 42811 | 01 |

Colors: 17-Black Twill, 01-Black. See page 37 for detailed color/fabric views.

SOFT TOP AND CONVERSION KITS



Halftop Soft Top on a Wrangler JKU 4-Door. Does not come with roll bar covers



Sunrider feature for easy access to open air.



HALFTOP SOFT TOP AND CONVERSION KITS

- Give your JK Wrangler an all-new look by adding this conversion kit to an existing Trektop soft top or buy as a complete stand-alone soft top.
- Modular design allows you to run all 3 components together, or remove panels for an open-air experience.
- Integrated Sunrider® feature allows open air in seconds without having to remove or store panels.
- Zippered mesh rear window for additional air flow.
- No-drill installation.
- Available in our Premium Black Twill or Black Diamond material.

Premium Twill

- 30-oz. triple-layer Premium Twill fabric has superior durability to other fabric used in Jeep soft tops.
- Features a smooth, wrinkle-resistant appearance and contains no PVCs.
- More flexible with softer feel and superior cold-weather performance.
- Industry-leading 40 mil, DOT-approved vinyl side and rear windows.



Zippered mesh window for additional air flow.

 California Proposition 65 Warning: Cancer and Reproductive Harm. www.P65Warnings.ca.gov

| YEAR | MODEL | PART # | COLOR |
|---------|--|---------------|--------|
| 2007-18 | Halftop Conversion Kit For Wrangler JKU 4-Door Trektop | 80103* | 17, 35 |
| 2007-18 | Complete Halftop Soft Top For Wrangler JKU 4-Door | 53901 | 17, 35 |
| 2007-18 | Halftop Conversion Kit For Wrangler JK 2-Door Trektop | 80102* | 17, 35 |
| 2007-18 | Complete Halftop Soft Top For Wrangler JK 2-Door | 53900 | 17, 35 |

All models have door surrounds, tailgate bar, removable DOT-approved windows, and sunroof feature. Doors not included. Premium Twill fabric has 40 mil thick windows.

Colors: 17-Black Twill, 35-Black Diamond. See page 37 for detailed color/fabric views.

*Must have Trektop soft top installed. See pages 12-13 for more details on Trektop.

TREKTOP FAMILY OF SOFT TOPS WITH JEEP® BADGING

Bestop is proud to be an official licensee of Jeep



2015 Wrangler JK Unlimited
56453-17



2017 Wrangler JK
2-Door 56452-17



TREKTOP™

- Run as fully-enclosed, all-season soft top or remove the sides and rear window and enjoy as a bikini (options for a variety of window configurations)
- New Sunrider® design allows the top to open from inside the vehicle with an unobstructed view without the front arch bar (Sunrider® hardware is made of high-strength steel and engineered thermoplastic polymer)
- Improved fabric positioning and tension with the Bestop® F.I.T. System (Fabric Install & Tensioning System) only on JK 4-door models
- Hybrid zipper/zipperless design utilizes patented zipperless technology to allow for easy removal of window panels and zippers on rear panel provide security and easy changes in configuration
- Kit includes: soft top fabric, patented factory-exact door surrounds, tinted and replaceable windows, integrated header, tailgate bar, and Sunrider® feature
- Works with all factory full- and half-steel doors as well as Bestop® door kits (sold separately)
- Tough, 28-oz multi-ply, premium grade Sailcloth material offers OEM quality noise reduction and insulation
- Tinted, removable 30 mil thick windows for black diamond material that are DOT approved
- Premium Twill fabric has superior durability and is featured on high-end sports and luxury cars
- Elegant, smooth and wrinkle-resistant fabric containing no PVCs, is easy to clean, and is more flexible with a softer feel and superior cold-weather performance than Sailcloth fabric
- Industry leading 40 mil thick windows for black twill material that are DOT approved
- Available in premium Twill or Black Diamond fabric

| YEAR | WRANGLER JK MODELS | PART # | COLORS |
|---------|------------------------------|--------|--------|
| 2007-18 | Wrangler JK 2-Door | 56452 | 17, 35 |
| 2007-18 | Wrangler JK 4-Door Unlimited | 56453 | 17, 35 |
| YEAR | ACCESSORY | PART # | COLOR |
| 2007-24 | JK Window Storage Bag | 42815 | 35 |

All models have 30% tinted windows, door surrounds, tailgate bar, removable DOT-approved windows, and sunroof feature. Doors not included. Black Diamond fabric has 30 mil thick windows. Black Twill fabric has 40 mil thick windows.

Colors: 17-Black Twill, 35-Black Diamond. See page 37 for detailed color/fabric views.

JEEP LICENSED SOFT TOPS

Glass side and rear windows. Side window have sliders for increased ventilation



2016 Wrangler JK Unlimited
54463-17



2016 Wrangler JK Unlimited
54423-17



2013 Wrangler JK 2-Door
54462-17



2013 Wrangler JK 2-Door
54422-17



TREKTOP™ PRO

- Industry-first hard rear glass hatch allows for easy, one hand operation and accessibility to rear cargo area—no messing with zippers
- Let the sun in with Bestop's exclusive Sunrider® flip-back panel
- Allows easy install or removal of rear hatch and side window panels
- Side windows feature slider panels for extra ventilation in the back
- Easily converts into a Safari Bikini® Top for open-air driving
- Weighs less than a hard top, has all-season capability
- Rear glass hatch has gas assist strut and integrated defroster connect

⚠ California Proposition 65 Warning: Cancer and Reproductive Harm.

TREKTOP PRO HYBRID SOFT TOP APPLICATIONS

| YEAR | MODEL | PART # | COLORS |
|---|----------------------------------|--------|--------|
| 2007-18 | Wrangler JK 2-Door | 54462 | 17 |
| 2007-18 | Wrangler JK 4-Door Unlimited | 54463 | 17 |
| All models have 30% tinted windows, door surrounds, tailgate bar and sunroof feature. Doors not included. | | | |
| Colors: 17-Black Twill. See page 37 for detailed color/fabric views. | | | |
| YEAR | ACCESSORY | PART # | COLOR |
| 2007-18 | Defroster/Rear Wiper Harness | 54857 | 01 |
| 2007-18 | Rear Window Wiper Motor Assembly | 54858 | 01 |
| 2007-18 | Window Storage Portfolio Bag | 42811 | 01 |
| Color: 01-Black. See page 37 for detailed color/fabric views. | | | |

TREKTOP™ GLIDE

- Innovative new folding frame design lets the Trektop™ Glide™ function like a convertible top—just fold back behind the rear seat for a total open-air ride. For full coverage, the Trektop™ Glide™ is fast and simple to close
- Zipperless side and rear panels allow for easy slide-in and slide-out, just like the ultra-premium Trektop™ Pro soft top
- Premium Twill features 40 mil, DOT-approved vinyl side and rear windows have 30% tint to help keep interior cooler in warm weather
- Built-in Sunrider® sunroof allows for open air driving and hardware is made of high strength steel and engineered thermoplastic polymer. 2-Door model only opens for the front seats.
- Includes all the soft top fabric, side and rear windows, door surrounds, tailgate bar, and all hardware for a no-drill installation

⚠ California Proposition 65 Warning: Cancer and Reproductive Harm.

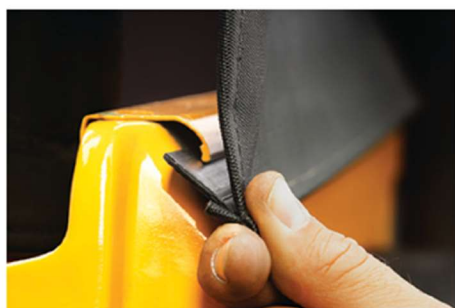
TREKTOP GLIDE SOFT TOP APPLICATIONS

| YEAR | MODEL | PART # | COLORS |
|--|-----------------------|--------|--------|
| 2007-18 | Wrangler JK 2-Door | 54422 | 17, 35 |
| 2007-18 | Wrangler JK 4-Door | 54423 | 17, 35 |
| YEAR | ACCESSORY | PART # | COLOR |
| 2007-18 | JK Window Storage Bag | 42815 | 35 |
| All models have 30% tinted windows, door surrounds, tailgate bar, removable DOT-approved windows, and sunroof feature. Doors not included. Black Diamond fabric has 30 mil thick windows. Premium Twill fabric has 40 mil thick windows. | | | |
| Colors: 17-Black Twill, 35-Black Diamond. See page 37 for detailed color/fabric views. | | | |

SAILCLOTH REPLACE-A-TOP™



Wrangler JK Unlimited
79137-35



The Belt-Rail™ system offers ease of installation and provides a snug, trim fit

SAILCLOTH REPLACE-A-TOP™ (FOR OEM HARDWARE)

- Requires factory original hardware for installation
- Tough, multi-ply, 28 oz. premium-grade fabric dramatically reduces outside noise and enhances insulation for a more comfortable ride
- Kit includes soft top and windows
- Heat-sealed 30 mil vinyl windows meet U.S. and European regulations
- Built to factory original quality specifications to ensure a snug, proper fit
- Optional 30% tinted window feature for customized look on most models

California Proposition 65 Warning: Cancer and Reproductive Harm. www.P65Warnings.ca.gov

| YEAR | MODEL | DOORS | WINDOWS | PART # | COLORS |
|-------|----------------------------------|----------------------|--------------------|--------------|--------|
| 07-09 | Wrangler JK 2-Door | for full steel doors | tinted side & rear | 79136 | 35 |
| 07-09 | Wrangler JK 4-Door | for full steel doors | tinted side & rear | 79137 | 35 |
| 10-18 | Wrangler JK 2-Door (cable style) | for full steel doors | tinted side & rear | 79146 | 35 |
| 10-18 | Wrangler JK 4-Door (cable style) | for full steel doors | tinted side & rear | 79147 | 35 |

Colors: 35-Black Diamond. See page 37 for detailed color/fabric views.



Fully retracts for open air enjoyment



Easily pull forward with one hand



Sun protection when locked forward

SUNSCREEN FOR WRANGLER JK

- Mesh bikini when you want it—easily retracts when you don't
- Simply unhook the Sunscreen from the front and let it roll back and out of sight for open-air experience
- For sun protection, reach above and pull the Sunscreen up and over the front seats, hooking it into place behind the visor
- Remains installed under most soft tops (not compatible with Trektop™ and Trektop™ Pro)
- Deployable when your soft top or Sunrider® are open

- Quick installation—no drilling required
- UV-resistant fabric stands up to the elements and will not fade
- Durable edging designed to resist fraying
- Not compatible with factory Freedom Panels

⚠ California Proposition 65 Warning: Cancer and Reproductive Harm. www.P65Warnings.ca.gov



Sunscreen securely latches to footman loops

| YEAR | MODEL | FITS | PART # | COLOR |
|-------|--------------------------|--|--------|-------|
| 07-18 | 2- or 4-Door JK Wrangler | Soft Top Application: Sits against sound bar, one-time install, leave in place with soft top (will not work with Trektop™, Trektop Glide, and Trektop Pro) | 52405 | 11 |
| 07-18 | 2- or 4-Door JK Wrangler | Sunrider for Hardtop Application: works only with the Sunrider for Hardtop (will not work with any other soft top) | 52406 | 11 |

Color: 11-Black Mesh

SUN BIKINI® TOPS

- Doesn't need the added cost of a windshield channel to install
- Uses simple hook-n-loop fastener and J-Hook system for no-drill install
- Installs in just a couple of minutes
- Choose Targa-style standard length or extended Safari length that covers all the way back over rear cargo area
- Choose Mesh fabric for filtered sunlight inside, or solid black diamond vinyl fabric that won't let water or light penetrate its surface

⚠ California Proposition 65 Warning: Cancer and Reproductive Harm. www.P65Warnings.ca.gov



52400-11



52401-35



| YEAR | MODEL | PART # | FABRIC |
|-------|-------------------------------------|--------|--------|
| 07-18 | Targa-style Wrangler JK 2- & 4-Door | 52400 | 11, 35 |
| 07-18 | Safari-style Wrangler JK 2-Door | 52402 | 11, 35 |
| 07-18 | Safari-style Wrangler JK 4-Door | 52401 | 11, 35 |

Fabrics: 11-Mesh, 35-Black Diamond. See page 37 for detailed color/fabric views.

BIKINI TOPS & FABRIC ACCESSORIES



JK Header-Style
Targa Bikini®
52586-35



JK Header-Style
Safari Bikini®
52583-35

JK Cable-Style
Safari Bikini®
52594-35



HEADER & CABLE SAFARI BIKINI® TOPS

- Attaches to windshield with a Bestop® windshield channel (sold separately); header-style Bkinis use no-drill windshield channels
- Offers full-length protection for both front and rear passengers

⚠ California Proposition 65 Warning: Cancer and Reproductive Harm. www.P65Warnings.ca.gov

| YEAR | MODEL | REQUIRES CHANNEL # | PART # | COLORS |
|-------|---|--------------------|--------------|--------|
| 10-18 | Header-style Safari Bikini Wrangler JK 2-Door | 51243 | 52583 | 35 |
| 10-18 | Header-style Safari Bikini Wrangler JK 4-Door | 51243 | 52584 | 35 |
| 10-18 | Cable-style Safari Bikini Wrangler JK 2-Door | Included* | 52593 | 11, 35 |
| 10-18 | Cable-style Safari Bikini Wrangler JK 4-Door | Included* | 52594 | 11, 35 |

* Requires cable factory door surrounds to install, sold separately.

Colors: 11-Mesh, 35-Black Diamond. See page 37 for detailed color/fabric views.

TARGA-STYLE HEADER BIKINI® TOPS

- Attaches to windshield with Bestop® no-drill windshield channel (sold separately)
- Attaches directly to sport bars for a fitted, clean look
- Designed for use with or without factory door surrounds
- Premium fabric maintains shape in any temperature, is mildew-resistant, contains UV-inhibitors, and is offered in original factory colors
- High-strength thread at all stress points for durability
- Industrial-grade webbing helps minimize flapping
- Heavy-duty composite buckles and fittings for a long life
- Optional Mesh (Color Code 11) material is tear-resistant

⚠ California Proposition 65 Warning: Cancer and Reproductive Harm. www.P65Warnings.ca.gov

| YEAR | MODEL | REQUIRES CHANNEL # | PART # | COLORS |
|-------|--------------------|--------------------|--------------|--------|
| 10-18 | Wrangler JK 2-Door | 51243 | 52586 | 35 |

Colors: 35-Black Diamond. See page 37 for detailed color/fabric views.

DUSTER™ DECK COVER

- Protects rear of vehicle from sun, rain, and dust
- Collars seal around rear sport bars preventing leakage
- Premium fabric maintains shape in any temperature, is mildew-resistant, contains UV-inhibitors, and is offered in original factory colors
- Design allows tailgate to open without detaching the Duster™ Deck Cover on most models

⚠ California Proposition 65 Warning: Cancer and Reproductive Harm. www.P65Warnings.ca.gov



| YEAR | MODEL | PRODUCT | WITH | PART # | COLORS |
|-------|--------------------|-----------------------------|--|--------------|--------|
| 07-18 | Wrangler JK 2-Door | Duster Deck Cover | With soft top hardware removed, factory tailgate bar required or Bestop tailgate bar | 90033 | 35 |
| 07-18 | Wrangler JK 4-Door | Duster Deck Cover | With soft top hardware removed, factory tailgate bar required or Bestop tailgate bar | 90031 | 35 |
| 07-18 | Wrangler JK 4-Door | Duster Deck Cover Extension | Extension required only if Windjammer is installed behind front seats | 90034 | 35 |

Colors: 35-Black Diamond. See page 37 for detailed color/fabric views.

WINDJAMMER™

- Helps divert majority of sun, wind, and dust from entering cab and keeps heat in cockpit
- Easily attaches to center sport bar with straps and buckles; attaches to floor using Belt-Rail™ system for most applications
- Premium fabric maintains shape in any temperature, is mildew-resistant, contains UV-inhibitors, and is offered in original factory colors
- In combination, the Bestop® Windjammer™, Bikini® Top, and Duster™ Deck Cover provide a stylish look while offering protection from the elements
- Windjammer™ features heavy-duty factory original fabric with 30 mil vinyl window. Wraps around the sport bars to better protect the cockpit from dust, wind, and rain

⚠ California Proposition 65 Warning: Cancer and Reproductive Harm. www.P65Warnings.ca.gov



80039-35

WRAPAROUND™ WINDJAMMER™

- Completely wraps around sport bars to better protect the cockpit from sun, dust and wind
- Combine with Bestop® Bikini® and Duster™ for a cab enclosure utilizing a 3-part system
- Requires Sound Bar Cap 80040

⚠ California Proposition 65 Warning: Cancer and Reproductive Harm. www.P65Warnings.ca.gov



80041-35

SOUND BAR CAP

- Features heavy-duty factory original fabric to protect the sound bar from the elements
- Required for the innovative WrapAround™ Windjammer™ for JK 2-Door models

⚠ California Proposition 65 Warning: Cancer and Reproductive Harm. www.P65Warnings.ca.gov



80040-35

WINDJAMMER™

| YEAR | MODEL | PRODUCT | REQUIREMENTS | PART # | COLORS |
|-------|--------------------|------------|---|--------------|--------|
| 07-18 | Wrangler JK 2-Door | Windjammer | -- | 80031 | 35 |
| 07-18 | Wrangler JK 4-Door | Windjammer | Requires Duster #90031 and Duster Extension #90034 if installing behind front seats | 80039 | 35 |

Colors: 35-Black Diamond. See page 37 for detailed color/fabric views.

WRAPAROUND WINDJAMMER™

| YEAR | MODEL | PRODUCT | REQUIREMENTS | PART # | COLORS |
|-------|--------------------|-----------------------|--|--------------|--------|
| 07-18 | Wrangler JK 2-Door | Wraparound Windjammer | Requires Sound Bar Cap #80040 and factory-style door surrounds | 80041 | 35 |

Colors: 35-Black Diamond. See page 37 for detailed color/fabric views.

SOUND BAR CAP

| YEAR | MODEL | PRODUCT | WITH | PART # | COLORS |
|-------|--------------------|---------------|--|--------------|--------|
| 07-18 | Wrangler JK 2-Door | Sound Bar Cap | Required with Wraparound Windjammer #80041 | 80040 | 35 |

Colors: 35-Black Diamond. See page 37 for detailed color/fabric views.

FABRIC ACCESSORIES & HARDWARE



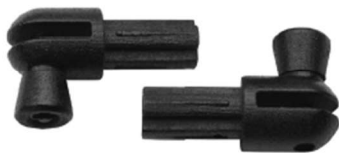
TINTED REPLACEMENT WINDOW KITS

- Kit consists of two side windows and one rear window
- Tinted window kits offer a 30% tint for maximum protection and meets U.S. and European regulations
- Heavy-duty molded coil-tooth zippers allow for easy window installation and removal
- Exterior fabric color matches Bestop® and factory-original soft tops for unsurpassed appearance
- Now available for Black Twill soft tops to match fabric exactly

| YEAR | MODEL | FITS | PART # | COLORS |
|-------|--------------------|---|--------------|--------|
| 11-18 | Wrangler JK 2-Door | Sailcloth Replace-A-Top 79146 & Supertop NX 54722 | 58134 | 35 |
| 11-18 | Wrangler JK 4-Door | Sailcloth Replace-A-Top 79147 | 58135 | 35 |
| 07-18 | Wrangler JK 2-Door | Supertop NX Black Twill 54822 | 58442 | 17 |
| 07-18 | Wrangler JK 4-Door | Supertop NX Black Twill 54823 | 58443 | 17 |
| 07-18 | Wrangler JK 2-Door | Trektop NX 56822 | 58222 | 35 |
| 07-18 | Wrangler JK 4-Door | Trektop NX 56823 | 58223 | 35 |
| 07-18 | Wrangler JK 2-Door | Trektop NX Black Twill 56922 | 58422 | 17 |
| 07-18 | Wrangler JK 4-Door | Trektop NX Black Twill 56923 | 58423 | 17 |
| 07-18 | Wrangler JK 2-Door | Trektop Pro Black Twill 54852 | 58424 | 17 |
| 07-18 | Wrangler JK 4-Door | Trektop Pro Black Twill 54853 | 58425 | 17 |
| 07-18 | Wrangler JK 2-Door | Trektop NX Black Twill 56852 | 58426 | 17 |
| 07-18 | Wrangler JK 4-Door | Trektop NX Black Twill 56853 | 58427 | 17 |
| 07-18 | Wrangler JK 2-Door | Trektop NX Glide Black Twill 54922 | 58428 | 17 |
| 07-18 | Wrangler JK 4-Door | Trektop NX Glide Black Twill 54923 | 58429 | 17 |

Colors: 17-Black Twill, 35-Black Diamond. See page 37 for detailed color/fabric views.

QUICK RELEASE BOW KNUCKLES



- Fits factory hardware or Bestop® soft top hardware (not compatible with factory cable style lift assist on 13-17 JKU 4DR)
- Molded plastic knuckle speeds up top removal
- Set of six

⚠ California Proposition 65 Warning: Cancer and Reproductive Harm. www.P65Warnings.ca.gov

| YEAR | MODEL | PART # | COLOR |
|-----------------|-------------------------|--------------|-------|
| 97-18 | Wrangler JK 2- & 4-door | 51289 | 01 |
| Color: 01-Black | | | |



TAILGATE BAR KIT

- Replace old or worn out tailgate bar
- Includes one tailgate bar and two retainer mounts

⚠ California Proposition 65 Warning: Cancer and Reproductive Harm. www.P65Warnings.ca.gov

| YEAR | MODEL | PART # | COLOR |
|-----------------|-------------------------|--------------|-------|
| 07-18 | Wrangler JK 2- & 4-Door | 52601 | 01 |
| Color: 01-Black | | | |



FACTORY-STYLE REPLACEMENT HEADER ASSEMBLY

- Replaces factory header and can be used with any OE style soft tops
- OEM style construction, composite polymer header
- 2-piece OEM style construction steel and composite plastic header for JK
- Kit includes header assembly with OEM style latches
- Does not work with Bikini® tops

⚠ California Proposition 65 Warning: Cancer and Reproductive Harm. www.P65Warnings.ca.gov

| YEAR | MODEL | PART # | COLOR |
|-----------------|-------------------------|--------------|-------|
| 07-18 | Wrangler JK 2- & 4-Door | 55013 | 01 |
| Color: 01-Black | | | |



07-18 JK Factory Style
Bow Kit (Cable-Style)
55001-01

FACTORY STYLE BOW KITS

- Designed to replace your factory hardware
- Made of carbon steel and engineered thermoplastic polymer
- Made to meet or exceed all OEM requirements

⚠ California Proposition 65 Warning: Cancer and Reproductive Harm. www.P65Warnings.ca.gov

| YEAR | MODEL | PART # | COLOR |
|---|---------------------|--------------|-------|
| 07-18 | Wrangler JK 2-Door* | 55000 | 01 |
| 07-18 | Wrangler JK 4-Door* | 55001 | 01 |
| Includes replacement hardware, door surrounds, tailgate bar, and retainer clips. *Cable-style hardware to be used with 2010+ style tops. | | | |
| Color: 01-Black | | | |

WINDSHIELD CHANNELS



- To attach a Bikini® to your vehicle, you need a windshield channel
- Carefully check the condition of existing channel to make sure it's tightly attached and free of rust or corrosion
- If you have a hardtop on your vehicle, a windshield channel must be installed for the Bikini® to fit
- Some windshield channels require drilling to install
- No-drill application. For Header Bkinis, this channel fits part numbers 52580, 52581, 52583, 52584 and 52586

⚠ California Proposition 65 Warning: Cancer and Reproductive Harm. www.P65Warnings.ca.gov

| YEAR | MODEL | PART # | COLOR |
|-----------------|------------------------------------|--------------|-------|
| 07-18 | Wrangler JK 2- & 4-Door (No-Drill) | 51243 | 01 |
| Color: 01-Black | | | |

DOOR SURROUND KIT

- Factory-style door surrounds provide a superior attachment for tops and sealing surface for doors
- Made of fiberglass-filled polypropylene and built to last
- Compatible with OEM soft goods and Bestop's® Replace-A-Top®, Supertop®, and Sailcloth Replace-A-Top™
- Complete kit comes with driver and passenger side door surround, 4-door surround knobs and tailgate bar
- Compatible with 2010-2018 hardware (Wrangler JK models only)

⚠ California Proposition 65 Warning: Cancer and Reproductive Harm. www.P65Warnings.ca.gov



2012 Wrangler JK
55010-01

| YEAR | MODEL | PART # | COLOR |
|-----------------|--|--------------|-------|
| 07-18 | Wrangler JK 2-Door (Door surrounds for Wrangler JK are not compatible with 07-09 Factory Tops) | 55010 | 01 |
| 07-18 | Wrangler JK 4-Door (Door surrounds for Wrangler JK are not compatible with 07-09 Factory Tops) | 55011 | 01 |
| Color: 01-Black | | | |

SNAP REPAIR KIT

- Replacement snaps for broken or missing snap closures on the upper door rails and the body tub that secure the top in place
- Includes replacement snaps and installation tool
- For Wrangler JK soft tops

⚠ California Proposition 65 Warning: Cancer and Reproductive Harm. www.P65Warnings.ca.gov



| YEAR | MODEL | PART # | COLOR |
|-----------|-------------|--------------|-------|
| 07-18 | Wrangler JK | 93003 | 50 |
| Color: 50 | | | |

DOORS AND DOOR ACCESSORIES



ELEMENT™ DOOR ENCLOSURE KIT

- Turn Element™ Doors into half doors
- Pre-punched for mirror mount bolts
- Satin black powder-coated steel, ready to paint to match vehicle color, if desired
- Use with Element™ upper doors for full cab enclosure

⚠ California Proposition 65 Warning: Cancer and Reproductive Harm. www.P65Warnings.ca.gov



ELEMENT™ DOOR UPPER DOORS

- Installs on Element™ Door
- Made with same premium fabric as Supertop® and Trektop™ Family
- Double-bulb weather strip provides good seal against the elements
- Use hook-and-loop fastening system for tight, secure closure with Element Door

⚠ California Proposition 65 Warning: Cancer and Reproductive Harm. www.P65Warnings.ca.gov

ELEMENT™ DOORS

- Heavy-duty 11/4" tube construction provides security and protection, ventilation, and better trail vision
- Element™ Door Kit includes latches, door restraint strap, threaded holes in mirror mount plate, and dome light shut off bracket
- Pre-threaded mirror mount plate for OEM and Bestop® Replacement Mirrors
- Turn your Element™ Doors into lower half doors with optional enclosure kit, sold separately
- Optional Door Enclosure Kit is made of steel and is paintable for a color matched finish. Attaches to Element™ Door with locator feet and bolts. No drilling required
- Mirrors sold separately (see page 29)

⚠ California Proposition 65 Warning: Cancer and Reproductive Harm. www.P65Warnings.ca.gov

ELEMENT™ DOORS

| YEAR | MODEL | DETAILS | INCLUDES | PART # | COLOR |
|-------|-------------------------|-------------|--|--------------|-------|
| 07-18 | Wrangler JK 2- & 4-Door | front doors | two lower door frames & paddle handles | 51826 | 01 |
| 07-18 | Wrangler JK 4-Door | rear doors | two lower door frames & paddle handles | 51827 | 01 |

ELEMENT™ DOOR ENCLOSURE KIT

| YEAR | MODEL | DETAILS | INCLUDES | PART # | COLOR |
|-------|-------------------------|-------------------|--|--------------|-------|
| 07-18 | Wrangler JK 2- & 4-Door | Front; Fits 51826 | two steel black powder-coated, paintable door covers | 51803 | 01 |
| 07-18 | Wrangler JK 4-Door | Rear; Fits 51827 | two steel black powder-coated, paintable door covers | 51804 | 01 |

Color: 01-Black

ELEMENT™ DOOR UPPER DOORS

| YEAR | MODEL | DETAILS | INCLUDES | PART # | COLORS |
|-------|-------------------------|-------------------|----------------------|--------------|--------|
| 07-18 | Wrangler JK 2- & 4-Door | Front; Fits 51826 | two upper soft doors | 51805 | 17, 35 |
| 07-18 | Wrangler JK 4-Door | Rear; Fits 51827 | two upper soft doors | 51806 | 17, 35 |

Colors: 17-Black Twill, 35-Black Diamond. See page 37 for detailed color/fabric views.



2-PIECE DOORS

- Most versatile door on the market. Bestop's® 2-piece soft door offers full enclosure from the elements or quick upper-half removal for open-air driving
- 2-piece soft door kits include the passenger and driver side upper and lower soft doors complete with Rotary or Paddle Handle kits
- 2-piece soft doors are compatible with Supertop®, Sunrider®, Trektop™, Sunrider® for Hardtop, Trektop™ Glide, and Halftop™
- Snug fit is ensured by using adjustable lower pivot pins and door collars
- To facilitate a good seal, hook and loop fastens upper and lower doors together and double-bulb weather stripping surrounds the door
- Exterior fabric color matches Bestop and factory-original soft tops for unsurpassed appearance

⚠ California Proposition 65 Warning: Cancer and Reproductive Harm. www.P65Warnings.ca.gov

2-PIECE DOORS

| YEAR | MODEL | POSITION | FITS | PART # | COLORS |
|-------|------------------------|----------|--|--------------|--------|
| 07-18 | Wrangler JK 2 & 4-Door | Front | Factory soft tops and all Bestop Soft Tops | 51798 | 17, 35 |
| 07-18 | Wrangler JK 4-Door | Rear | Factory soft tops and all Bestop Soft Tops | 51799 | 17, 35 |

LOWER HALF DOORS

| YEAR | MODEL | POSITION | INCLUDES | PART # | COLORS |
|-------|---|----------|-----------------------------|--------------|--------|
| 07-18 | Front Half Doors Wrangler JK 2 & 4-Door | Front | Rotary style paddle handles | 53040 | 35 |
| 07-18 | Rear Half Doors Wrangler JK 4-Door | Rear | Rotary style paddle handles | 53041 | 35 |

Colors: 17-Black Twill, 35-Black Diamond. See page 37 for detailed color/fabric views.

MIRROR MOUNTING CUPS

- Sturdy steel construction
- Fit Front Element Doors for the Wrangler JK
- Mount OE Mirrors or Bestop Replacement Mirrors (51260-01)
- Sold in pairs

⚠ California Proposition 65 Warning: Cancer and Reproductive Harm. www.P65Warnings.ca.gov



| YEAR | MODEL | FITS | PART # | COLOR |
|-------|-------------|---------------------------|--------------|-------|
| 07-18 | Wrangler JK | Wrangler JK Element Doors | 51734 | 01 |

Colors: 01-Black

LOWER HALF DOORS

- Kits includes pair of lower Half Doors complete with Paddle Handle kits
- Adjustable lower door pivot pins allow for snug fit
- Exterior fabric color matches Bestop and factory-original soft tops for unsurpassed appearance
- Bestop Half Doors are quickly and easily installed
- Does not receive Upper Soft Door
- Lower doors only, no uppers will fit

⚠ California Proposition 65 Warning: Cancer and Reproductive Harm. www.P65Warnings.ca.gov

REPLACEMENT MIRRORS

- Replace worn or missing mirrors with OEM styling and features
- All mirror kits are sold in pairs and come complete with hardware
- Engineered to fit a wide variety of OE and Bestop door styles

⚠ California Proposition 65 Warning: Cancer and Reproductive Harm. www.P65Warnings.ca.gov



| YEAR | MODEL | FITS | PART # | COLORS |
|-------|-------------------------|------------------------------------|--------------|--------|
| 07-18 | Wrangler JK 2- & 4-Door | without powered mirrors | 51260 | 01 |
| - | Wrangler JK 2- & 4-Door | works with JK - 2 Piece Soft Doors | 51261 | 01 |

Colors: 01-Black

STORAGE AND SECURITY



JK Driver-Side Underseat Locking Storage Box
42640-01



UNDERSEAT LOCKING STORAGE BOX FOR JK

- Provides lockable hidden storage space
- Custom-designed to fit under driver's seat or passenger seat on JK
- Comes with pick-resistant lock and two keys
- Heavy-duty braided steel cable cord with clear vinyl cover included to securely attach to any location inside vehicle
- Made of heavy-duty, 16-gauge carbon steel with textured black powder coat finish
- Storage space for JK is 16" x 5 3/4" x 2 7/8"

⚠ California Proposition 65 Warning: Cancer and Reproductive Harm. www.P65Warnings.ca.gov



JK Passenger-Side Underseat Locking Storage Box
42642-01



| YEAR | UNDERSEAT LOCKING BOX | LOCATION | PART # | COLOR |
|------------------|-------------------------------|-----------|--------|-------|
| 07-18 | Wrangler JK 2-Door/JKU 4-Door | Driver | 42640 | 01 |
| 07-18 | Wrangler JKU 4-Door | Passenger | 42642 | 01 |
| 08-10 | Wrangler JK 2-Door | Passenger | 42642 | 01 |
| Color: 01-Black. | | | | |



Center Console Lock Box
42643-01

CENTER CONSOLE STORAGE LOCK BOX FOR JK

- Fits precisely into interior of factory Wrangler JK console
- All welded construction with hinged lid
- Features integrated lock with two keys
- Openings for the factory electrical point and USB ports

⚠ California Proposition 65 Warning: Cancer and Reproductive Harm. www.P65Warnings.ca.gov



Universal Storage Lock Box
42644-01

UNIVERSAL STORAGE LOCK BOX

- Can be positioned as free-standing unit on any 10" x 8" surface
- 16-gauge steel with powder-coat finish
- Pick-resistant cylinder lid lock with two coded keys
- Theft-resistant 5' security cable with integrated lock and two keys
- Full-width piano hinge for easy operation and durability
- Interior felt padding reduces shifting of contents and rattling
- Pre-drilled interior mounting holes with self-tapping screws
- 10.0" l x 8.0" w x 3.25" h

⚠ California Proposition 65 Warning: Cancer and Reproductive Harm. www.P65Warnings.ca.gov

| YEAR | CENTER CONSOLE LOCK BOX | LOCATION | PART # | COLOR |
|------------------|--|----------------|--------|-------|
| 11-18 | Wrangler JK 2- & 4-Door | Center Console | 42643 | 01 |
| YEAR | UNIVERSAL LOCK BOX | LOCATION | PART # | COLOR |
| All | Fits many full size truck/SUV consoles, or vehicles where security cable can be anchored, or to use in home and garage | Universal | 42644 | 01 |
| Color: 01-Black. | | | | |



ROUGH RIDER® TAILGATE SHELF

- Patented custom design fits 2007-2018 Wrangler JK 2-Door and Wrangler Unlimited 4-Door tailgates
- Press & Release latch for quick and easy opening with one free hand
- Polyester mesh removes to create a traditional shelf or work space-perfect for tailgating or camping
- Heavy-duty polymer housing
- No-drill installation
- 25" L x 14" H x 4.5" D (closed) & 276 square inches of table area and 2,969 cubic inches inside the net
- Shelf extends out about 12 inches in down position

⚠ California Proposition 65 Warning: Cancer and Reproductive Harm. www.P65Warnings.ca.gov

| YEAR | MODEL | PART # | COLOR |
|------------------|-------------------------|--------|-------|
| 07-18 | Wrangler JK 2- & 4-Door | 54140 | 01 |
| Color: 01-Black. | | | |



Open or close with one hand



Use the shelf to temporarily hold your coffee, tools, or gear. The pop-up mesh crate works great for groceries, camp gear, and much more.

ROUGH RIDER® SEAT BACK ORGANIZER

- Tailored fit for Jeep Wranglers
- Made with mildew- and UV-resistant Soft Top fabric for tough as nails durability in any climate
- Requires headrest for installation
- Features four pockets with dividers and two cup holders
- Marine-grade thread prevents seams from splitting
- Provides inside and out storage for your Jeep, all accessories sold separately

⚠ California Proposition 65 Warning: Cancer and Reproductive Harm. www.P65Warnings.ca.gov

| YEAR | MODEL | DETAILS | PART # | COLOR |
|--------------------------|----------------------|----------------|--------|-------|
| 86-18 | Wrangler 2- & 4-Door | Seat Back Org. | 54132 | 35 |
| Color: 35-Black Diamond. | | | | |



STORAGE AND SECURITY

ROUGH RIDER®
SPARE TIRE ORGANIZER

- Fit wide range of spare tire diameters: 30"-40" tires
 - Features two small/two large pockets on each side and one long front pocket
- ⚠ California Proposition 65 Warning: Cancer and Reproductive Harm. www.P65Warnings.ca.gov



Spare Tire Organizer has two heavy-duty straps for attachment to the tire, both around the circumference of the tire and across the back side.
54134-35

| YEAR | MODEL | DETAILS | PART # | COLOR |
|------|-------------------|-----------------|--------|-------|
| All | 30"-33", 10" Wide | Spare Tire Org. | 54133 | 35 |
| All | 34"-37", 12" Wide | Spare Tire Org. | 54134 | 35 |
| All | 38"-40", 14" Wide | Spare Tire Org. | 54135 | 35 |

Color: 35-Black Diamond. See page 37 for detailed color/fabric views.



ROUGH RIDER®
UNDERSEAT ORGANIZER

- Fits conveniently under driver seat or Wrangler Unlimited back seat
 - Features two mesh pockets on outside and two dividers on inside
 - Measures 12 inches long x 10 inches wide x 6 inches high
- ⚠ California Proposition 65 Warning: Cancer and Reproductive Harm. www.P65Warnings.ca.gov

| YEAR | MODEL | DETAILS | PART # | COLOR |
|-------|-----------------------|---|--------|-------|
| 07-18 | Wrangler JK Unlimited | Underseat Organizer (measures 12"x10"x6") | 54131 | 35 |

Color: 35-Black Diamond. See page 37 for detailed color/fabric views.

Convenient storage tucked away under the seat, but available for travel duty away from the Jeep when needed (measures 12x10x6 inches)
54131-35



*Small bag measures 11"x4"x10"
Large bag measures 15"x4"x10"
54136-35*



ROUGH RIDER®
TAILGATE ORGANIZER

- BeltRail® attachment system for easy slide-in, slide-out convenience
 - Easy installation on Wrangler JK tailgates
- ⚠ California Proposition 65 Warning: Cancer and Reproductive Harm. www.P65Warnings.ca.gov

| YEAR | MODEL | DETAILS | PART # | COLOR |
|-------|-------------------------|---|--------|-------|
| 87-18 | Wrangler JK 2- & 4-door | Tailgate Organizer (small bag measures 11x4x10 inches, large bag measures 15x4x10 inches) | 54136 | 35 |

Color: 35-Black Diamond. See page 37 for detailed color/fabric views.





Must-have for groceries; lots of storage pockets plus internal dividers to keep all your items where you put them
54137-35

ROUGH RIDER® CARGO TRUNK ORGANIZER

- Individual bag measures 32" long, 12" wide, 6" deep
- Secure to sport bar uprights for easy-access storage
- Outer accessory pockets provide easy access to small, frequently used items
- Premium fabric, color matched with factory colors
- Sold individually; converts to shoulder strap duffel bag for portability

⚠ California Proposition 65 Warning: Cancer and Reproductive Harm. www.P65Warnings.ca.gov



On-the-go storage providing easy access to small, frequently used items
54110-35

ROUGH RIDER® SADDLE BAGS

- Outer accessory pockets secure with hook-and-loop for easy access to small, frequently used items, converts to shoulder strap duffel bag

⚠ California Proposition 65 Warning: Cancer and Reproductive Harm. www.P65Warnings.ca.gov

| YEAR | MODEL | DETAILS | PART # | COLORS |
|-------|--------------------|---------------------------------------|--------------|--------|
| All | Any Vehicle | Cargo Trunk Organizer | 54137 | 35 |
| 07-18 | Wrangler JK 2-Door | RoughRider® Saddlebag; 6" x 12" x 32" | 54110 | 35 |

Colors: 01-Black, 35-Black Diamond. See page 37 for detailed color/fabric views.



Helps secure and safeguard gear or valuables from prying eyes or potential theft
42702-01

INSTATRUNK™

- Secures and safeguards belongings out of sight
- All steel unit fastens into cargo area behind rear seat
- 2.7 cubic feet of lockable storage space
- Easy to install with mounting hardware included

⚠ California Proposition 65 Warning: Cancer and Reproductive Harm. www.P65Warnings.ca.gov

| YEAR | MODEL | PART # | COLOR |
|-------|-------------------------|--------------|-------|
| 07-10 | Wrangler JK 2- & 4-Door | 42702 | 01 |
| 11-18 | Wrangler JK 2- & 4-Door | 42704 | 01 |

Colors: 01-Black.



SPORT BAR COVERS

- Complete replacement kit for worn, faded factory covers
- Sport Bar Covers offer clean custom look
- Premium fabric maintains shape in any temperature, is mildew-resistant, contains UV inhibitors, and is offered in original factory colors
- Industrial strength thread ensures durable Sport Bar Cover construction
- Compatible with all Bestop® soft tops and accessories

⚠ California Proposition 65 Warning: Cancer and Reproductive Harm. www.P65Warnings.ca.gov

| YEAR | MODEL | PART # | COLORS |
|-------|--------------------|--------------|--------|
| 07-18 | Wrangler JK 4-Door | 80025 | 35 |

Colors: 35-Black Diamond. See page 37 for detailed color/fabric views.

STORAGE AND SECURITY



Use only when vehicle is parked



Comes with Stuff Sack to keep your Trail Cover neatly stored

ALL-WEATHER TOPLESS TRAIL COVER

- Protects windshield and interior of Jeep® from harsh effects of sun, wind, and rain
 - Provides complete door coverage
 - Comes complete with Stuff Sack that keeps Trail Cover neatly stored
 - Soft top needs to be removed for proper installation (will NOT fit over a hard or soft top)
- ⚠ California Proposition 65 Warning: Cancer and Reproductive Harm. www.P65Warnings.ca.gov

| YEAR | MODEL | PART # | COLORS |
|-------|--------------------|--------|--------|
| 07-18 | Wrangler JK 2-Door | 81040 | 09 |
| 07-18 | Wrangler JK 4-Door | 81041 | 09 |

Colors: 09-Charcoal. See page 37 for detailed color/fabric views.



ALL-WEATHER TRAIL COVER FOR JK

- Designed to fit over hardtop or soft tops (81044-01, 81045-01, 81050-01) or over fastback Trektops (81043-01)
 - Lightweight, easy-to-fold material packs away conveniently
 - Eliminates the need to reinstall windows, doors, or Freedom Panels for quick storms
 - Weather-resistant material helps protect vehicle interior and exterior from the elements
 - Helps deter unwelcome visitors
 - Door opening protection flaps for easy access to interior when cover is on
 - Adjustable straps are designed to provide a snug, tight fit
- ⚠ California Proposition 65 Warning: Cancer and Reproductive Harm. www.P65Warnings.ca.gov

| YEAR | MODEL | PART # | COLORS |
|-------|---|--------|--------|
| 07-18 | Wrangler JK 4-Door W/ Trektop Installed | 81043 | 01 |
| 07-18 | Wrangler JK 2-Door W/ Hardtop Installed | 81044 | 01 |
| 07-18 | Wrangler JK 4-Door W/ Hardtop or Soft Top | 81045 | 01 |

* All covers work with or without hard or soft top.

Colors: 01-Black. See page 37 for detailed color/fabric views.

WINDOW STORAGE PORTFOLIO

- Part # 42811 Holds Trektop™ Pro rear glass hatch and both side window panels, order Part # 42815 for Trektop, Trektop Glide, Trektop Ultra, Supertop, and Supertop Ultra windows.
- Made of ballastic nylon material, it has carrying handles and a heavy-duty zipper closure
- Designed to hang from seat headrests inside for quick storage, if desired

⚠ California Proposition 65 Warning: Cancer and Reproductive Harm. www.P65Warnings.ca.gov



| YEAR | MODEL | DETAILS | PART # | COLORS |
|-------|--------------------------------|--|--------|--------|
| 07-18 | Wrangler JK Window Storage Bag | For Trektop Pro Soft Top Windows | 42811 | 01 |
| 07-18 | JK Window Storage Bag | For Trektop, Trektop Glide, Trektop Ultra, Supertop and Supertop Ultra Windows | 42815 | 35 |

Colors: 01-Black, 35-Black Diamond. See page 37 for detailed color/fabric views.



HOSS™ WINDOW STORAGE DUFFEL

- Provides safe and convenient storage. Minimizes scuffing. Fabric is water-resistant and made to protect PVC glass from scratching
- Not compatible with Trektop™ line of tops

⚠ California Proposition 65 Warning: Cancer and Reproductive Harm. www.P65Warnings.ca.gov



| MODEL | PART # | COLOR |
|---|--------|-------|
| Most Bestop and factory zip out vinyl windows | 42810 | 09 |

Colors: 09-Charcoal. See page 37 for detailed color/fabric views.



HOSS™ HARDTOP HOIST

- Lifts and stores all Jeep® Wrangler Factory Hardtops; 220lb capacity
- Easy to install, simple to operate
- Standard 120 volt power, 5 Ft. Power cord
- Wall mount controller with 15 ft. Cord and key lock switch
- AVAILABLE ONLY AT BESTOP.COM

⚠ California Proposition 65 Warning: Cancer and Reproductive Harm. www.P65Warnings.ca.gov



| MODEL | PART # | COLOR |
|---|--------|-------|
| HOSS™ hardtop hoist residential motorized lift system | 42820 | 01 |

Colors: 01-Black.

SEAT COVERS AND FLOOR LINERS



29280-04



29281-09

SEAT COVERS FOR WRANGLER JK

- Tailored for 2007-2018 Jeep Wrangler JK 2-Door and 4-Door Wrangler Unlimited factory seats
- Side-impact airbag-compatible
- UV inhibitors and stabilizers resist fading from sunlight, keeps covers looking brand new
- Special 2-ply, laminated 600-denier polyester top layer with soft white polyester knit backing
- Weatherproof protection includes top layer surface coated with dry water-repellent (DWR) treatment while underside has polyurethane coating
- Tested for fire resistance
- Strap & Buckle system offers a secure, tight installation with no tools required
- Separate Headrest Covers included
- Front Seat Covers have map pockets on seat back
- Rear Seat Covers have child-seat tether openings
- ⚠ California Proposition 65 Warning: Cancer and Reproductive Harm. www.P65Warnings.ca.gov

| YEAR | MODEL | POSITION | INCLUDES | PART # | COLORS |
|-----------|-------------------------|----------|---|--------------|------------|
| 07-12 | Wrangler JK 2- & 4-Door | front | separate headrest covers, rear map pocket | 29280 | 04, 09, 35 |
| 13-18 | Wrangler JK 2- & 4-Door | front | separate headrest covers, rear map pocket | 29283 | 04, 09, 35 |
| 07-18 | Wrangler JK 2-Door | rear | separate headrest covers | 29282 | 04, 09, 35 |
| 08-12 | Wrangler JK 4-Door | rear | separate headrest covers | 29281 | 04, 09, 35 |
| 07, 13-18 | Wrangler JK 4-Door | rear | separate headrest covers | 29284 | 04, 09, 35 |

Colors: 04-Tan, 09-Charcoal, 35-Black Diamond. See page 37 for detailed color/fabric views.

FLOOR LINERS

- Contoured, precise floor liners for JK Wrangler - Front seat, Rear seat, and Rear Cargo liner SKUs
- Superior TPE material outperforms cheaper liners and mats in extreme conditions
- Tall 5/16" treads minimize slip, raised edge lip holds up to 40% more liquid, channels mud away from shoes
- Standard floor hook cutouts fit the OE floor hook(s) and have raised walls
- Molded carpet grabbing nibs help secure the floor liner to vehicle's carpet
- Floor Liners sold in pairs, Rear Cargo Liner sold separately
- Made for Jeepers who really understand that their rig can get dirty

⚠ California Proposition 65 Warning: Cancer and Reproductive Harm. www.P65Warnings.ca.gov



51505-01

CARGO LINERS

- Contoured, precise fit assures complete coverage and stay-in-place stability
- Rear Cargo Liners accommodate seat belts if those were original equipment
- Superior TPE material outperforms cheaper liners and mats in extreme conditions
- Tall 5/16" treads minimize slip, raised edge lip
- Made for Jeepers who really understand that their rig can get dirty

⚠ California Proposition 65 Warning: Cancer and Reproductive Harm. www.P65Warnings.ca.gov

| YEAR | MODEL | POSITION | PART # | COLOR |
|-------|--------------------------------|----------|--------------|-------|
| 07-13 | Wrangler JK 2- & 4-Door | front | 51500 | 01 |
| 14-18 | Wrangler JK 2- & 4-Door | front | 51513 | 01 |
| 07-10 | Wrangler JK 2-Door | rear | 51502 | 01 |
| 11-18 | Wrangler JK 2-Door | rear | 51503 | 01 |
| 07-18 | Wrangler JK 4-Door (one piece) | rear | 51504 | 01 |

Color: 01-Black.

| YEAR | MODEL | POSITION | PART # | COLOR |
|-------|--------------------------|------------|--------------|-------|
| 07-10 | Wrangler JK 2- & 4-Door* | rear cargo | 51505 | 01 |
| 11-18 | Wrangler JK 2- & 4-Door* | rear cargo | 51507 | 01 |

* with or without subwoofer

Color: 01-Black.



VINYL PROTECTANT

- Safely repels dust, grease, dirt, and mildew
- Developed to minimize fading, cracking, and hardening
- Easy application: wipe on, wipe off
- **Not for use on Twill fabric soft tops**



FABRIC CARE KIT

- All three primary fabric care and protectant products in one kit
- Keep one in your Jeep® and another in the garage for year-round use



VINYL FABRIC CLEANER

- Safely removes the toughest soils and stains
- Anti-oxidant, low pH, no bleach formula, leaves no residue
- Biodegradable and environmentally-friendly
- **Not for use on twill fabric soft tops**



ZIPPER CLEANER AND LUBRICANT

- Specially-formulated to clean and lubricate all types of metal and plastic zippers
- Contains no silicone or wax



VINYL WINDOW CLEANER

- Safely cleans and protects for unrivaled appearance of soft top windows
- Helps prevent UV damage, clouding, and cracking
- Easy application-wipe on, buff dry



BLACK AND COLOR TWILL PROTECTANT

- Formulated specifically for use on any Black and Color Twill soft top
- Safely helps seal out tough soils and stains
- Not for use on vinyl tops

FABRIC CARE

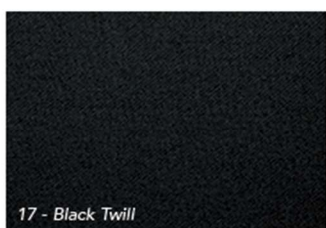
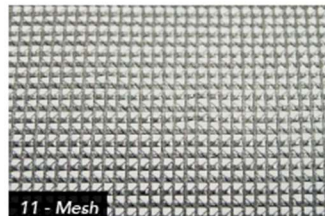
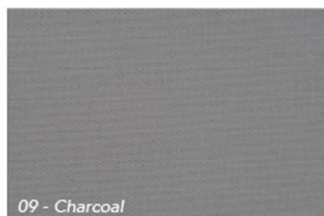
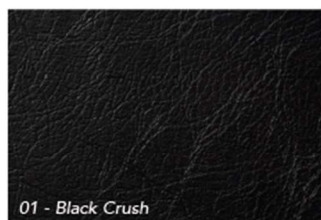
Bestop® fabrics used in our Soft Tops for Jeep® and Fabric Accessories are made from the best materials available, the same as Bestop supplies to Jeep on all Wrangler factory soft tops. Though tough and super durable, every fabric needs some TLC every now and then. We have just the product care and protection you need. These fabric and vinyl care products work great on Bestop Tonneau Covers and Bestop Trailmax™ II seats.

PLEASE READ ALL DIRECTIONS CAREFULLY, BEFORE USE.

| CLEANERS/PROTECTANTS | SINGLE IN-A-BOX | COLOR |
|--|-----------------|-------|
| Vinyl Fabric Cleaner - 16oz. bottle | 11211 | 00 |
| Vinyl Window Cleaner - 8oz. bottle | 11213 | 00 |
| Vinyl Protectant - 16oz. bottle | 11212 | 00 |
| Fabric Care Kit | 11215 | 00 |
| Zipper Cleaner & Lubricant - 2oz. bottle | 11216 | 00 |
| Twill Protectant - 16oz. bottle | 11217 | 00 |
| All cleaners/protectants will not harm Jeep or Truck finishes when used as directed. | | |

SWATCH GUIDE

PLEASE NOTE: not all applications are available in the colors shown in the swatch guide



MEET OUR BRANDS



PRP SEATS



For more than 20 years, PRP® has built high performance, customizable seats for Jeeps, trucks, and UTVs. Our line of safety harnesses and storage options have become essential for any vehicle that lives off-road. More recently, our premium seat covers for Jeeps and Toyota Tacoma have become big hits in both the on and off-road market. With over 60+ different colors and materials to choose from, we allow our customers to design the perfect look for their ride.



SCAN TO SEE THE HOTTEST NEW PRODUCTS FROM PRP

BAJA DESIGNS



Revolutionizing industry-leading lights is not just a job at Baja Designs®, but a lifelong passion for both the founders and employees. For 25+ years, we have engineered revolutionary ways to stay at the forefront of motorcycle, automotive, and UTV lighting. BD is widely recognized as "The Scientists of Lighting" and our products are sought out by professional race teams and hardcore off-roading enthusiasts alike.



SCAN TO SEE THE HOTTEST NEW PRODUCTS FROM BAJA DESIGNS

TUFFY SECURITY



Tuffy Security Products® delivers serious theft protection to vehicle owners, including off-roading enthusiasts and law enforcement professionals. We produce super high-quality steel security storage solutions in the USA. Our patented locking systems and designs, along with a strict adherence to the highest quality standards, make Tuffy Security Products the strongest option for anybody wanting to securely and safely store valuables in their vehicle.



SCAN TO SEE THE HOTTEST NEW PRODUCTS FROM TUFFY

SPEED STRAP



SpeedStrap® is the maker of an innovative family of premium tie-downs, weavable recovery straps, and accessories. The difference is in the quality of our ratchets. All of our tie-downs are built with a high quality ratchet mechanism that features our signature, wide handle comfort grip and protective end caps. Speedstrap has tie-downs and recovery straps for Jeeps, Trucks, Buggies, UTVs, ATVs, Motorcycles, and more!



SCAN TO SEE THE HOTTEST NEW PRODUCTS FROM SPEEDSTRAP

BULL RING



Bullring's are the premium tie-down anchor points for your truck. While the stock anchor points are inside the bed where its hard to reach, Bullrings easily install into the stake pockets on top of your bed rails. Snaps up when you want to use it to secure a load, snaps down flush when you don't. Each is made from stainless steel, with a 1000lbs rating. The OEM look and finish make you wonder why every truck doesn't already come with one. Available for Ford, Dodge, Chevy, GMC, & Toyota model trucks.



SCAN TO SEE THE HOTTEST NEW PRODUCTS FROM BULLRING

ALUMINESS



Our aluminum products are designed for strength and utility, providing additional protection for your vehicle. The lighter weight allows you to get full performance out of your suspension and prevents wear and tear on your alignment, brakes, and tires. In addition, you don't have to worry about rust!

We design, fabricate and weld bumpers, roof racks, and accessories for an ever-growing number of vehicles of various makes and models.



SCAN TO SEE THE HOTTEST NEW PRODUCTS FROM ALUMINESS

MGP



MGP is an American-based company with our manufacturing facility located in San Diego, California. After years of extensive research, we have developed a process that allows us to take the technology used in the Aerospace and Recreation industries and translate that into the high-performance products for automotive enthusiasts like yourself. Our MGP Caliper Covers combine these state-of-the-art technologies along with 30 years of engineering experience to bring you the highest quality aftermarket parts that are held to OEM standards.



SCAN TO SEE THE HOTTEST NEW PRODUCTS FROM MGP

SPOD



At sPOD, we use American made and manufactured components, all designed, engineered and constructed in Southern California using quality materials. Our design philosophy is simple: make the best possible product to withstand the most extreme conditions, with the most reliable and user-friendly systems. We pride ourselves in providing live and local customer support. Our customers can have confidence in knowing they are using equipment made to the highest industry standards.



SCAN TO SEE THE HOTTEST NEW PRODUCTS FROM SPOD

STATUS:



Status Racing is the G.O.A.T when it comes to the seat game! From full FIA approved racing seats to complete custom recliners and anything in between. We also offer custom racing harnesses, steering wheels, and shift knobs that will satisfy the needs of any car enthusiast.



SCAN TO SEE THE HOTTEST NEW PRODUCTS FROM STATUS

SOFTOPPER



Folding truck bed caps for over fifty models offered in tan, gray and black exist fitting 99% of all pickup trucks on and off the road. Our soft tops expanded into SUVs such as Chevy Blazers, Toyota 4Runners and Ford Broncos. And while we ship Softoppers to every corner of the entire world, all manufacturing and sewing is still done in North America



SCAN TO SEE THE HOTTEST NEW PRODUCTS FROM SOFTOPPER



AUTHORIZED INSTALLER NETWORK

JOIN TODAY!

BESTOP.COM | 800.845.3567

BESTOP IS OFFERING ITS STRONGEST AUTHORIZED INSTALLER NETWORK EVER.

Don't miss the opportunity to grow your customer base and receive more support than ever before. Join over 1,000 Bestop Authorized Installers today!

STAND OUT FROM YOUR COMPETITION

- Membership in the Bestop Authorized Installer network guarantees that you're positioned as a top seller of the industry's best-selling Jeep®, Bronco® and Truck accessories*
- Gain access to the industry's strongest library of selling tools
- Drive local customers to your store
- Maximize the benefits of Bestop's nationwide branding and marketing programs
- Ensure that you have the highest level of Bestop product knowledge, availability and installation services

INCREDIBLE MEMBER BENEFITS*

- Featured listing in the Bestop Authorized Installer Directory and high-traffic 'Find an Installer' pages on Bestop.com
- Access to Bestop Marketing Assets, including photography, video and plug-and-play ads and graphics
- Access to Bestop U. Our online training and installation guides
- Access to Bestop's Sales Boosters - our new featured product program
- Bestop Branding Materials, such as posters, counter signs, promotional support, full-color 6' x 2' Bestop banner, and more
- Access to Bestop Business Development Manager in-person or virtual product knowledge training

| DECIDE WHICH PROGRAM LEVEL IS RIGHT FOR YOU | PLATINUM AUTHORIZED INSTALLER | AUTHORIZED INSTALLER |
|--|-------------------------------|----------------------|
| Access to Bestop Digital Marketing Assets | + | + |
| Access to Sales Booster Program | + | + |
| Access to Bestop U for online training and installation guides | + | + |
| Listing on Bestop "Find an Installer" page | + | + |
| Listings as Bestop Platinum Authorized Installer member on Bestop.com & website link to YOUR website | + | |
| Grow your local customer base with Bestop Installation Matchmaker | + | |
| Bestop Showroom Branding Kit (when available) | + | |
| Receive additional marketing support through direct mail, social media, Platinum Installer locator listing and a PAI door sticker. | + | |

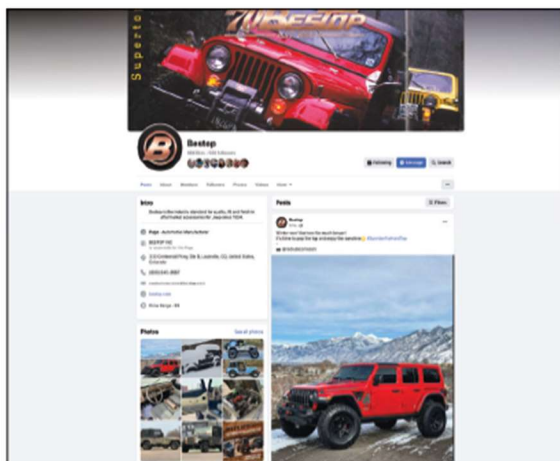
*Program is subject to change.

SIGN UP TODAY!

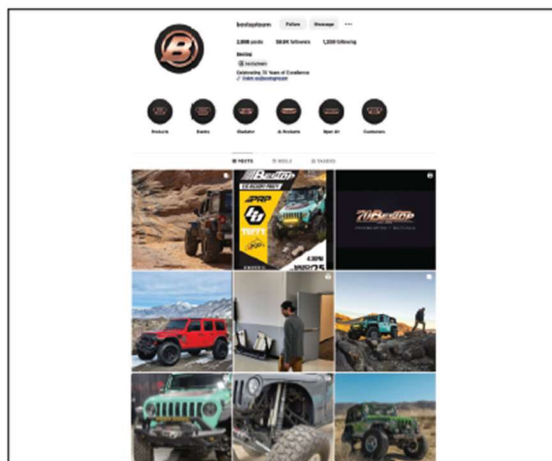
Sign up for the Bestop Authorized Installer Network today. To learn more, go to <https://www.bestop.com/authorized-installer-network/>

* Benefits vary according to Authorized Installer membership level

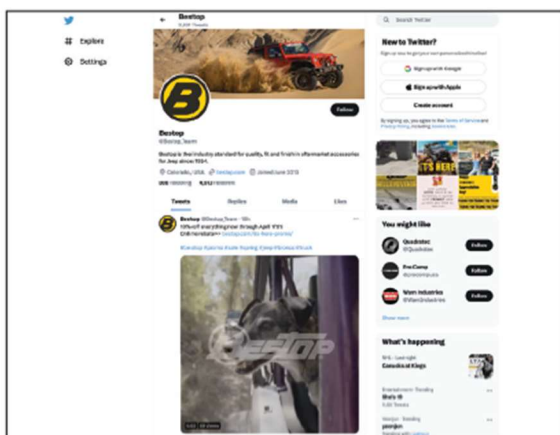
FOLLOW US ON SOCIAL MEDIA



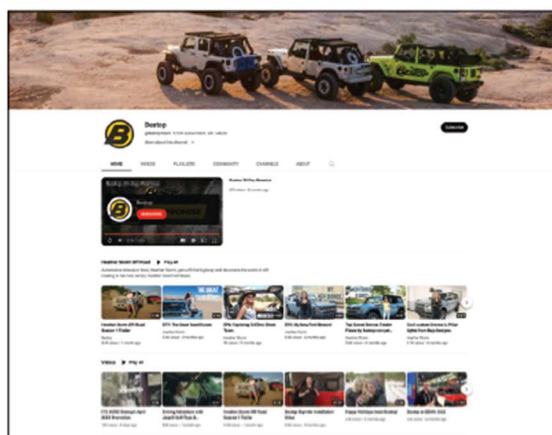
www.facebook.com/BestopTeam



www.instagram.com/bestopteam



twitter.com/bestop_team



www.youtube.com/user/BestopTeam



Find more information on all Bestop® Jeep®, Bronco® and Truck products 24/7 at Bestop.com

Bestop Customer Service is available Monday through Friday from 8am to 4pm, MT

Phone (800) 845-3567 | Fax (303) 464-2702

Email: customerservice@bestop.com

Catalog Part #677.86

© 2025 Bestop®, Inc.

BeltRail, Bestop, Bikini, Duster, Element, Halftop, HOSS, Instatrunk, Replace-A-Top, RoughRider, Sunrider, Supertop, Trekstep, TrailMax, Trektop, Windjammer, WrapAround and circle B logo are trademarks of Bestop, Inc. Chrysler, Dodge, Jeep and RAM are registered trademarks of FCA US LLC. Printed in USA.



BAJADESIGNS.COM



TUFFYPRODUCTS.COM



PRPSEATS.COM



STATUSRACING.COM



SPEEDSTRAP.COM



BULLRING.COM



ALUMINESS.COM



CALIPERCOVERS.COM



4X4SPOD.COM



SOFTOPPER.COM