

BESTOP

SOFT TOPS AND
OFF-ROAD ACCESSORIES



TRUCK



IDEAS never get stuck in neutral. From the sewing machine inside our small upholstery shop 65 years ago, innovations have run wild and free into the wilderness. We're always discovering.

Today we stand proud as the exclusive supplier of soft tops to Jeep – a 35-year legacy still going strong.

TABLE OF CONTENTS

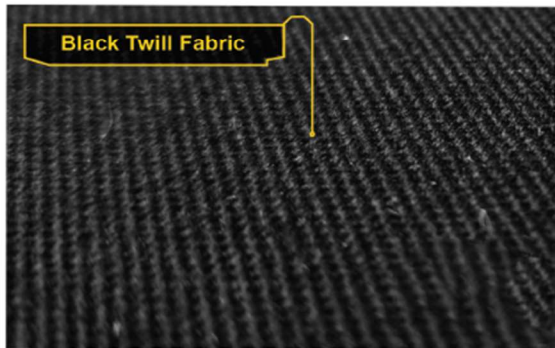
MATERIAL COMPARISON	3
SOFT TOPS	4-7
Supertop For Truck 2.....	4-5
Supertop For Truck.....	6-7
TONNEAU COVERS	8-11
EZ-Fold Tonneau	8-9
EZ-Roll Tonneau.....	10-11
ACCESSORIES	12
Sun Bikini For Gladiator.....	12
Header & Cable Bikini For Gladiator.....	12

FABRIC CARE	13
Fabric Care	13
Fabric Swatch Guide	13
BESTOP® FAMILY BRANDS	14
JOBBER NETWORK	15

TOP MATERIAL COMPARISON



Deeper dive into our fabrics?
Premium Black Twill fabric offers year-round
installation and a classic look.



Black Twill Fabric



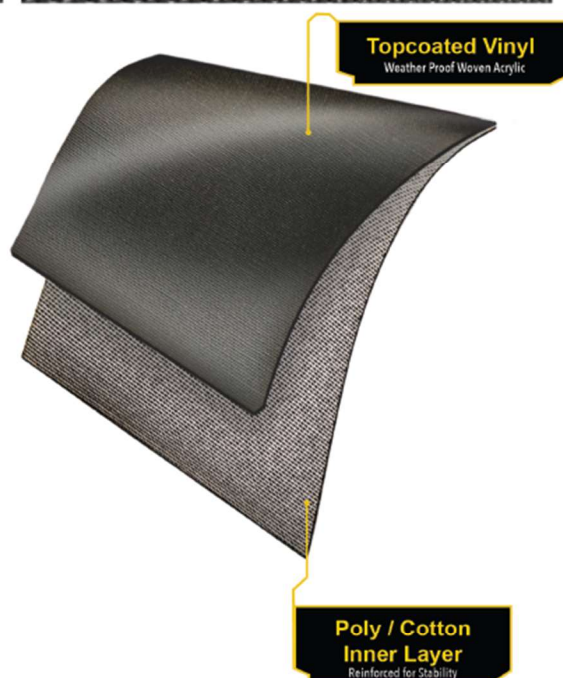
Black Diamond Sailcloth



Premium Twill Fabric
Weather Proof Woven Acrylic

Rubber Layer
Thermal and Audible
Insulation

**Polyester Fabric
Inner Layer**
Durability and Insulation



Topcoated Vinyl
Weather Proof Woven Acrylic

**Poly / Cotton
Inner Layer**
Reinforced for Stability

SUPERTOP® FOR TRUCK 2



Removed windows

SUPERTOP® FOR TRUCK 2

- The ultimate in flexible storage and coverage for truck beds
- One person can install and remove Supertop™ for Truck 2 with the smooth folding operation
- Removable fabric side panels and rear curtain
- No-drill installation

- Quick bow release for easy removal
- Front retainer bar provides better and tighter fit behind cab
- Fully-taped seams keep water out

⚠ California Proposition 65 Warning: Cancer and Reproductive Harm. www.P65Warnings.ca.gov



SUPERTOP® FOR TRUCK 2 TONNEAU COVERS

- Designed specifically for use with the Supertop For Truck 2 tops
- Fully integrated for easy transition from full top to tonneau configurations
- Utilizes Supertop For Truck 2 side, front rails and tailgate bar
- Easy to remove Supertop For Truck 2 top and install low profile tonneau protection
- Bestop Heavy Duty Tonneau Fabric
- Bestop EZ-Roll and bow system
- Bestop Belt-Rail Attachment System

⚠ California Proposition 65 Warning: Cancer and Reproductive Harm. www.P65Warnings.ca.gov

SUPERTOP FOR TRUCK 2



Tailgate opens with window installed



Easily adapts to oversized cargo

YEARS	MAKE	MODEL	SUPERTOP FOR TRUCK 2 PART #	SUPERTOP FOR TRUCK 2 TONNEAU PART #	COLOR
19-Current	Chevy/GMC	Silverado/Sierra 1500 (5.8 ft. bed)	77318	-	35
19-Current	Chevy/GMC	Silverado/Sierra 1500 (6.5 ft. bed)	77319	-	35
20-Current	Chevy/GMC	Silverado/Sierra 2500/3500 Silverado/Sierra (6.8 ft. bed)	77337	77437	35
15-23	Chevy/GMC	Colorado/Canyon (6 ft. bed)	77322	77422	35
15-23	Chevy/GMC	Colorado/Canyon (5 ft. bed)	77323	77423	35
19-Current	RAM	1500 Crew/Quad Cab (5.7 ft. bed)	77327	77427	35
19-Current	RAM	1500 (6.4 ft. bed)	77328	77428	35
15-Current	Ford	F-150 (6.5 ft. bed)	77336	77436	35
17-Current	Ford	F-250/F-350 Super Duty (6.75 ft. bed)	77334	-	35
15-Current	Ford	F-150 (5.5 ft. bed)	77309	77409	35
19-23	Ford	Ranger (6 ft. bed)	77331	77431	35
19-23	Ford	Ranger (5 ft. bed)	77332	77432	35
24-Current	Ford	Ranger (5 ft. bed)	77342	-	35
20-Current	Jeep	Gladiator	77326	77426	17, 35
04-Current	Nissan	Titan (with and without Uti-Track) (6.5 ft. bed)	77313	77413	35
04-Current	Nissan	Titan (with and without Uti-Track) (5.5 ft. bed)	77314	77414	35
05-Current	Nissan	Frontier (5 ft. bed)	77338	77438	35
05-Current	Nissan	Frontier (6 ft. bed)	77339	77439	35
05-Current	Toyota	Tacoma (6 ft. bed)	77301	77401	35
05-Current	Toyota	Tacoma (5 ft. bed)	77311	77411	35

Colors: 17-Black Twill, 35-Black Diamond

Supertop For Truck 2 is required for installation of tonneau accessory.

SUPERTOP® FOR TRUCK



Folded-in truck bed



Removed windows



Tinted windows

SUPERTOP® FOR TRUCK

- Great for fifth wheel and bed-mounted hitches
- Made of heavy-duty, diamond-point grain, UV-protected mildew-resistant fabric
- Includes the top fabric, tinted windows, rails, and hardware for complete installation
- Available for mid-size and full-size truck bed applications
- Folds forward for full bed access
- Replacement side window kits available, rear window replacements are sold individually
- No-drill, four-clamp installation

- Quick bow release for easy removal
- Side and rear windows can be conveniently removed
- Industrial-strength thread provides durable soft top construction
- Fully-taped seams keep water out
- OEM-quality, molded tooth zippers allow easy window installation and removal

⚠ California Proposition 65 Warning: Cancer and Reproductive Harm. www.P65Warnings.ca.gov



Toyota® Tacoma application



Chevy® application

YEARS	MODEL	DETAILS	PART #	COLOR
99-17	Chevy	Silverado 1500/1500HD/2500/2500HD/3500 (6.5 ft. bed)	76303	35
99-Current	Chevy	Silverado (8 ft. bed)	76315	35
04-17	Chevy	Silverado Crew Cab (5.5 ft. bed)	76310	35
94-03	Chevy	S-10 (6 ft. bed)	76302	35
02-08	RAM	1500/2500/3500 Reg/Quad/Mega; For 6.5 ft. bed; w/o Rambox	76304	35
00-17	RAM	2500/3500 (8 ft. bed) except RamBox	76317	35
04-17	Ford	F-150, Reg/Super Cab (6.5 ft. bed)	76305	35
04-17	Ford	F-150, Reg/Super Cab (5.5 ft. bed)	76309	35
99-16	Ford	F-250/F-350 Super Duty (6.75 ft. bed)	76307	35
99-16	Ford	F-250/F-350 Super Duty (8 ft. bed)	76317	35
83-11	Ford	Ranger (6 ft. bed)	76302	35
99-17	GMC	Sierra (6.5 ft. bed)	76303	35
04-17	GMC	Sierra Crew Cab (5.5 ft. bed)	76310	35
99-Current	GMC	Sierra (8 ft. bed)	76315	35
94-03	GMC	Sonoma (6 ft. bed)	76302	35
05-14	Lincoln	Mark LT 4-Dr. (5.5 ft. bed)	76309	35
94-06	Mazda	B-Series (6 ft. bed)	76302	35
04-18	Nissan	Titan King Cab without Utili-Track (6.5 ft. bed)	76305	35
04-18	Nissan	Titan Crew Cab without Utili-Track (5.5 ft. bed)	76309	35
05-19	Toyota	Tacoma Reg/Ext/Double Cab (6 ft. bed)	76301	35
05-19	Toyota	Tacoma Double Cab 4-Dr (5 ft. bed)	76308	35

Colors: 35-Black Diamond

YEARS	TINTED SIDE WINDOW REPLACEMENT KITS FOR SUPERTOP FOR TRUCK (DOES NOT FIT SUPERTOP FOR TRUCK 2 MODELS)	PART #	COLOR
All	76301, 76302, 76303, 76304, 76305, 76306 *	76320	35
All	76307 *	76322	35
All	76308, 76309, 76310 *	76324	35
All	76313 *	76326	35
All	76317 *	76328	35

* Includes both side windows. Rear windows sold separately by calling customer service 800-845-3567.

EZ FOLD™ SOFT TONNEAU



*Easiest and
fastest tonneau
to install*



Heavy-duty adjustable clamps secure tonneau to truck bed



Folded and secured in back of cab, the EZ Fold™ allows for nearly full bed use

EZ FOLD™ TRIFOLD SOFT TONNEAU

- Built-in boxed aluminum frame provides superior strength, quick folding, and does not require any rail installation
- OEM-quality, heavy-duty adjustable clamps secure or release with one-hand operation
- Durable leather-grain, stretch- and shrink-resistant textured vinyl, withstands all climates, mildew- and UV-resistant

- Reinforced corner construction for additional strength and stability
- Integrated buckle straps secure folded tonneau to truck bed
- Easy to install and remove, even in extreme weather

⚠ California Proposition 65 Warning: Cancer and Reproductive Harm. www.P65Warnings.ca.gov



TRIFOLD SOFT TONNEAU

TONNEAUS

YEAR	MODEL	DETAILS	BED LENGTH	PART #
94-03	Chevy/GMC	S-Series Fleetside	6'	16019-01
04-12	Chevy/GMC	Colorado/Canyon	5'	16151-01
04-12	Chevy/GMC	Colorado/Canyon	6'	16152-01
15-Current	Chevy/GMC	Colorado/ Canyon	5.2'	16219-01
15-23	Chevy/GMC	Colorado/ Canyon	6.2'	16220-01
88-99	Chevy/GMC	C/K Pickup Fleetside; except new body style	6.5'	16005-01
99-07	Chevy/GMC	Silverado/Sierra 1500, 2007 Classic style only	8'	16204-01
99-07	Chevy/GMC	Silverado/Sierra 1500, Fleetside; 2007 Classic style only	6.5'	16205-01
04-07	Chevy/GMC	Silverado/Sierra Crew Cab; 2007 Classic style only	5.8'	16209-01
07-13	Chevy/GMC	Silverado/Sierra 1500; won't fit Classic body style; without bed management system	8'	16210-01
07-13	Chevy/GMC	Silverado/Sierra 1500; won't fit Classic body style; without bed management system	6.5'	16211-01
07-13	Chevy/GMC	Silverado/Sierra 1500; Crew Cab; won't fit Classic body style; without bed management	5.8'	16212-01
14-18	Chevy/GMC	Silverado/Sierra 1500	5.8'	16216-01
14-18	Chevy/GMC	Silverado/Sierra 1500	6.5'	16217-01
15-18	Chevy/GMC	Silverado/Sierra 2500/3500 HD	6.5'	16217-01
14-19	Chevy/GMC	Silverado/Sierra 1500	8'	16218-01
15-19	Chevy/GMC	Silverado/Sierra 2500/3500 HD	8'	16218-01
19-Current	Chevy/GMC	Silverado/Sierra 1500	5.8'	16224-01
19-Current	Chevy/GMC	Silverado/Sierra 1500	6.5'	16225-01
19-Current	Chevy/GMC	Silverado/Sierra 1500/2500 HD/3500 HD	8'	16226-01
20-Current	Chevy/GMC	Silverado/Sierra 2500/3500 HD	6.8'	16243-01
87-04	Dodge	Dakota Quad Cab	6.5'	16061-01
00-04	Dodge	Dakota	5.3'	16062-01
05-10	Dodge	Dakota without Utility Rail system	6.5'	16063-01
02-08	RAM	1500 without Tailgate Spoiler	6.3'	16238-01
08-09	RAM	2500/3500; without Tailgate Spoiler	6.3'	16238-01
02-08	RAM	2500/3500; with Tailgate Spoiler	6.3'	16239-01
08-09	RAM	1500; with Tailgate Spoiler	6.3'	16239-01
09-Current	RAM	'09-Current 1500; '11-18 1500; '19 1500 Classic; '10-24 2500/3500; For 6.5 ft. bed; w/o RamBox	6.5'	16240-01
09-18	RAM	1500; except RamBox	5.7'	16241-01
19-Current	RAM	1500 without RamBox (Excluding Classic)	5.7'	16227-01
19-Current	RAM	1500 without RamBox (Excluding Classic)	6.5'	16228-01
19-Current	RAM	1500	8'	16229-01
09-Current	RAM	'09-Classic 1500; '10-18 1500; '19 1500 Classic; '10-C 2500/3500	8'	16242-01
24-Current	Ford	Maverick	5'	16247-01
82-11	Ford	Ranger Pickup; Styleside	6'	16030-01
93-11	Ford	Ranger Splash; Flareside	6'	16125-01
97-03	Ford	F-150, 04-04 F-150 Heritage	6.5'	16110-01
04-Current	Ford	F-150 Styleside; except '04 Heritage model	6.5'	16111-01
04-Current	Ford	F-150 Styleside	5.5'	16113-01
99-16	Ford	F-250/F-350	8'	16135-01
99-16	Ford	F-250/F-350	6.8'	16140-01
17-Current	Ford	F-250/F-350	6.8'	16222-01
17-Current	Ford	F-250/F-350	8'	16223-01
19-23	Ford	Ranger	5'	16232-01
19-23	Ford	Ranger	6'	16233-01
17-Current	Honda	Ridgeline	5'	16250-01
19-Current	Jeep	JT	5'	16280-35
19-Current	Jeep	JT Twill	5'	16280-17
94-09	Mazda	B-series Pickup Styleside	6'	16030-01
05-Current	Nissan	Frontier Crew Cab	4.7'	16146-01
05-Current	Nissan	Frontier King Cab/Crew Cab	6'	16147-01
04-23	Nissan	Titan King Cab	6.5'	16170-01
04-23	Nissan	Titan Crew Cab; without Utility Rail system	5.5'	16175-01
95-04	Toyota	Tacoma	6'	16024-01
05-23	Toyota	Tacoma	5'	16108-01
05-23	Toyota	Tacoma	6'	16109-01
24-Current	Toyota	Tacoma	5'	16249-01
24-Current	Toyota	Tacoma	6'	16248-01
07-Current	Toyota	Tundra without Deck Rails	6.5'	16181-01
07-Current	Toyota	Tundra without Deck Rails	5.5'	16182-01

TONNEAUS

EZ ROLL™ SOFT TONNEAU



Partially open shown for operational purposes only



Pull tabs at both rear corners for convenient operation



No-drill installation clamps secure frame rail assembly to bed




Roll-style tonneau, attaches with hook-and-loop fastener, mounts on top of bed rails

EZ ROLL™ SOFT TONNEAU

- Tough, premium-grade leather-grain vinyl-coated polyester withstands any climate or weather. Also mildew- and UV-resistant
- Bows integrated into the fabric for quick roll up
- Tonneau sits on top of bed and secures to rail with hook-and-loop fastener
- Features silver anodized aluminum rails and top quality fabric for that OEM look
- Bed clamps allow easy installation directly to bed with no drilling

- Rolls conveniently to the back of the truck bed in about a minute
- Allows tailgate access without removing cover
- Restraint straps secure rolled Tonneau behind cab
- Hook-and-loop system makes the EZ Roll™ easy to use

 California Proposition 65 Warning: Cancer and Reproductive Harm. www.P65Warnings.ca.gov



SOFT TONNEAU

YEAR	MODEL	DETAILS	BED LENGTH	PART #
88-99	Chevy/GMC	C/K Pickup Fleetside; except new body style	6.5'	19005-01
94-03	Chevy/GMC	S-Series Fleetside	6'	19019-01
04-12	Chevy/GMC	Colorado/Canyon	5'	19151-01
04-12	Chevy/GMC	Colorado/Canyon	6'	19152-01
15-Current	Chevy/GMC	Colorado/ Canyon	5'	19219-01
15-23	Chevy/GMC	Colorado/ Canyon	6'	19220-01
99-07	Chevy/GMC	Silverado/Sierra 1500, 2007 Classic style only	8'	19204-01
99-07	Chevy/GMC	Silverado/Sierra1500, Fleetside; (2007 Classic style only)	6.5'	19205-01
04-07	Chevy/GMC	Silverado/Sierra Crew Cab; (2007 Classic style only)	5.8'	19209-01
07-13	Chevy/GMC	Silverado/Sierra 1500; won't fit Classic body style; without bed management system	8'	19210-01
07-13	Chevy/GMC	Silverado/Sierra 1500; won't fit Classic body style; without bed management system	6.5'	19211-01
07-13	Chevy/GMC	Silverado/Sierra 1500; Crew Cab; won't fit Classic body style; without bed management	5.8'	19212-01
14-18	Chevy/GMC	Silverado/Sierra 1500	5.8'	19216-01
14-18	Chevy/GMC	'14-18 Silverado/Sierra 1500; '15-18 2500/3500 HD; For 6.5 ft. bed	6.5'	19217-01
14-19	Chevy/GMC	'14-18 Silverado/Sierra 1500; '15-18 2500/3500 HD; For 8 ft. bed	8'	19218-01
19-Current	Chevy/GMC	Silverado/Sierra 1500	5.8'	19224-01
19-Current	Chevy/GMC	Silverado/Sierra 1500	6.5'	19225-01
19-Current	Chevy/GMC	Silverado/Sierra 1500/2500 HD/3500 HD	8'	19226-01
20-Current	Chevy/GMC	Silverado/Sierra 2500 HD/3500 HD	6.8'	19243-01
87-04	Dodge	Dakota Quad Cab	6.5'	19061-01
00-04	Dodge	Dakota	5.3'	19062-01
02-08	RAM	1500; without Tailgate Spoiler	6.3'	19238-01
08-09	RAM	2500/3500; without Tailgate Spoiler	6.3'	19238-01
02-08	RAM	1500, 08-09 2500/3500; with Tailgate Spoiler	6.3'	19239-01
09-Current	RAM	09-Classic 1500; '10-18 1500; '19 1500 Classic; '10-C 2500/3500; For 6.5 ft. bed; w/o RamBox	6.3'	19240-01
09-18	RAM	1500; except RamBox	5.7'	19241-01
19-Current	RAM	1500; without RamBox (except Classic)	5.7'	19227-01
19-Current	RAM	1500; without RamBox (except Classic)	6.5'	19228-01
09-Current	RAM	09-CLASSIC 1500; '10-18 1500; '19 1500 Classic; '10-C 2500/3500	8'	19242-01
19-Current	RAM	1500	8'	19229-01
82-11	Ford	Ranger Pickup Styleside	6'	19030-01
93-11	Ford	Ranger Splash Flareside	6'	19125-01
97-03	Ford	F-150, 04-04 F-150 Heritage	6.5'	19110-01
04-Current	Ford	F-150 Styleside; except Heritage model	6.5'	19111-01
04-Current	Ford	F-150 Crew/Super Cab; Styleside; except Heritage model	5.5'	19113-01
99-16	Ford	F-250/F-350	8'	19135-01
99-16	Ford	F-250/F-350	6.8'	19140-01
09-21	Ford	F-150 Styleside	6.5'	19245-01
09-21	Ford	F-150 Styleside	5.5'	19246-01
17-Current	Ford	F250/350 Super Duty	6.8'	19222-01
17-Current	Ford	F250/350 Super Duty	8'	19223-01
19-23	Ford	Ranger	5'	19232-01
19-23	Ford	Ranger	6'	19233-01
24-Current	Ford	Maverick	5'	19247-01
19-Current	Jeep	JT	5'	19280-35
19-Current	Jeep	JTwill	5'	19280-17
94-09	Mazda	B-series Pickup Styleside	6'	19030-01
05-Current	Nissan	Frontier	5'	19146-01
05-Current	Nissan	Frontier	6'	19147-01
04-23	Nissan	Titan	6.5'	19170-01
04-23	Nissan	Titan	5.5'	19175-01
95-04	Toyota	Tacoma	6'	19024-01
05-23	Toyota	Tacoma	5'	19108-01
24-Current	Toyota	Tacoma	6'	19248-01
24-Current	Toyota	Tacoma	5'	19249-01
07-Current	Toyota	Tundra	6.5'	19181-01
07-Current	Toyota	Tundra	5.5'	19182-01

ACCESSORIES



SUN BIKINI® TOPS

- Doesn't need the added cost of a windshield channel to install
- Uses simple hook-n-loop fastener and J-Hook system for no-drill install
- Installs in just a couple of minutes
- Applications for TJ, JK and JL Wranglers as well as the Gladiator JT
- Choose Targa-style standard length or extended Safari length that covers all the way back over rear cargo area
- Choose Mesh fabric for filtered sunlight inside, or solid black diamond vinyl fabric that won't let water or light penetrate its surface

⚠ California Proposition 65 Warning: Cancer and Reproductive Harm. www.P65Warnings.ca.gov

YEAR	MODEL	PART #	FABRIC
20-24	Sun Bikini Gladiator	52413	11
Fabrics: 11-Mesh.			



Gladiator Header Style Targa Bikini



Gladiator Header Style Safari Bikini



Gladiator
Cable Style
Safari Bikini

HEADER AND CABLE BIKINI TOPS FOR GLADIATOR

- Premium fabric maintains its shape in any temperature, is mildew-resistant, resists UV fading
- High strength thread at all stress points ensures durable Bikini top construction
- Industrial-grade webbing helps minimize flapping
- Heavy-duty composite buckles and fittings for long life
- Part #s 52614 & 52606 install with a no-drill header windshield channel 51244-01
- Part # 52615 attaches with straps at the rear sport bar descenders

⚠ California Proposition 65 Warning: Cancer and Reproductive Harm. www.P65Warnings.ca.gov

YEAR	MODEL	REQUIRES CHANNEL #	PART #	COLORS
20-Current	Header Style Safari Bikini® For Gladiator	51244-01	52614	35
20-Current	Cable Style Safari Bikini® For Gladiator	Included	52615	35
20-Current	Header Style Targa Bikini® For Gladiator	51244-01	52606	35

Colors: 35-Black Diamond. See page 13 for detailed color/fabric views.



VINYL PROTECTANT

- Safely repels dust, grease, dirt, and mildew
- Developed to minimize fading, cracking, and hardening
- Easy application: wipe on, wipe off
- **Not for use on Twill fabric soft tops**



FABRIC CARE KIT

- All three primary fabric care and protectant products in one kit
- Keep one in your Jeep® and another in the garage for year-round use



VINYL FABRIC CLEANER

- Safely removes the toughest soils and stains
- Anti-oxidant, low pH, no bleach formula, leaves no residue
- Biodegradable and environmentally-friendly
- **Not for use on twill fabric soft tops**



ZIPPER CLEANER AND LUBRICANT

- Specially-formulated to clean and lubricate all types of metal and plastic zippers
- Contains no silicone or wax



VINYL WINDOW CLEANER

- Safely cleans and protects for unrivaled appearance of soft top windows
- Helps prevent UV damage, clouding, and cracking
- Easy application-wipe on, buff dry



BLACK AND COLOR TWILL PROTECTANT

- Formulated specifically for use on any Black and Color Twill soft top
- Safely helps seal out tough soils and stains
- Not for use on vinyl tops

FABRIC CARE

Bestop® fabrics used in our Soft Tops for Jeep® and Fabric Accessories are made from the best materials available, the same as Bestop supplies to Jeep on all Wrangler factory soft tops. Though tough and super durable, every fabric needs some TLC every now and then. We have just the product care and protection you need. These fabric and vinyl care products work great on Bestop Tonneau Covers and Bestop Trailmax™ II seats.

PLEASE READ ALL DIRECTIONS CAREFULLY, BEFORE USE.

CLEANERS/PROTECTANTS	SINGLE IN-A-BOX	COLOR
Vinyl Fabric Cleaner - 16oz. bottle	11211	00
Vinyl Window Cleaner - 8oz. bottle	11213	00
Vinyl Protectant - 16oz. bottle	11212	00
Fabric Care Kit	11215	00
Zipper Cleaner & Lubricant - 2oz. bottle	11216	00
Twill Protectant - 16oz. bottle	11217	00
All cleaners/protectants will not harm Jeep or Truck finishes when used as directed.		

SWATCH GUIDE

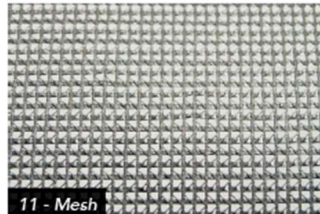
PLEASE NOTE: not all applications are available in the colors shown in the swatch guide



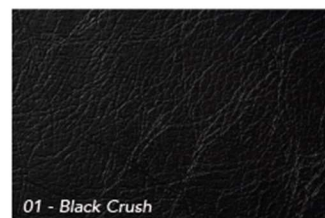
04 - Tan



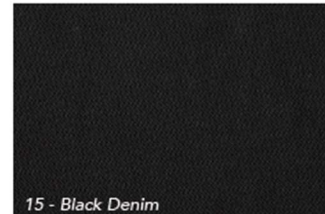
09 - Charcoal



11 - Mesh



01 - Black Crush



15 - Black Denim



17 - Black Twill



33 - Dark Tan



35 - Black Diamond



37 - Spice

MEET OUR BRANDS



PRP SEATS



For more than 20 years, PRP® has built high performance, customizable seats for Jeeps, trucks, and UTVs. Our line of safety harnesses and storage options have become essential for any vehicle that lives off-road. More recently, our premium seat covers for Jeeps and Toyota Tacoma have become big hits in both the on and off-road market. With over 60+ different colors and materials to choose from, we allow our customers to design the perfect look for their ride.



SCAN TO SEE THE HOTTEST NEW PRODUCTS FROM PRP

BAJA DESIGNS



Revolutionizing industry-leading lights is not just a job at Baja Designs®, but a lifelong passion for both the founders and employees. For 25+ years, we have engineered revolutionary ways to stay at the forefront of motorcycle, automotive, and UTV lighting. BD is widely recognized as "The Scientists of Lighting" and our products are sought out by professional race teams and hardcore off-roading enthusiasts alike.



SCAN TO SEE THE HOTTEST NEW PRODUCTS FROM BAJA DESIGNS

TUFFY SECURITY



Tuffy Security Products® delivers serious theft protection to vehicle owners, including off-roading enthusiasts and law enforcement professionals. We produce super high-quality steel security storage solutions in the USA. Our patented locking systems and designs, along with a strict adherence to the highest quality standards, make Tuffy Security Products the strongest option for anybody wanting to securely and safely store valuables in their vehicle.



SCAN TO SEE THE HOTTEST NEW PRODUCTS FROM TUFFY

SPEED STRAP



SpeedStrap® is the maker of an innovative family of premium tie-downs, weavable recovery straps, and accessories. The difference is in the quality of our ratchets. All of our tie-downs are built with a high quality ratchet mechanism that features our signature, wide handle comfort grip and protective end caps. Speedstrap has tie-downs and recovery straps for Jeeps, Trucks, Buggies, UTVs, ATV's, Motorcycles, and more!



SCAN TO SEE THE HOTTEST NEW PRODUCTS FROM SPEEDSTRAP

BULL RING



Bullring's are the premium tie-down anchor points for your truck. While the stock anchor points are inside the bed where its hard to reach, Bullrings easily install into the stake pockets on top of your bed rails. Snaps up when you want to use it to secure a load, snaps down flush when you don't. Each is made from stainless steel, with a 1000lbs rating. The OEM look and finish make you wonder why every truck doesn't already come with one. Available for Ford, Dodge, Chevy, GMC, & Toyota model trucks.



SCAN TO SEE THE HOTTEST NEW PRODUCTS FROM BULLRING

ALUMINESS



Our aluminum products are designed for strength and utility, providing additional protection for your vehicle. The lighter weight allows you to get full performance out of your suspension and prevents wear and tear on your alignment, brakes, and tires. In addition, you don't have to worry about rust!

We design, fabricate and weld bumpers, roof racks, and accessories for an ever-growing number of vehicles of various makes and models.



SCAN TO SEE THE HOTTEST NEW PRODUCTS FROM ALUMINESS

MGP



MGP is an American-based company with our manufacturing facility located in San Diego, California. After years of extensive research, we have developed a process that allows us to take the technology used in the Aerospace and Recreation industries and translate that into the high-performance products for automotive enthusiasts like yourself. Our MGP Caliper Covers combine these state-of-the-art technologies along with 30 years of engineering experience to bring you the highest quality aftermarket parts that are held to OEM standards.



SCAN TO SEE THE HOTTEST NEW PRODUCTS FROM MGP

SPOD



At sPOD, we use American made and manufactured components, all designed, engineered and constructed in Southern California using quality materials. Our design philosophy is simple: make the best possible product to withstand the most extreme conditions, with the most reliable and user-friendly systems. We pride ourselves in providing live and local customer support. Our customers can have confidence in knowing they are using equipment made to the highest industry standards.



SCAN TO SEE THE HOTTEST NEW PRODUCTS FROM SPOD

STATUS:



Status Racing is the G.O.A.T when it comes to the seat game! From full FIA approved racing seats to complete custom recliners and anything in between. We also offer custom racing harnesses, steering wheels, and shift knobs that will satisfy the needs of any car enthusiast.



SCAN TO SEE THE HOTTEST NEW PRODUCTS FROM STATUS

SOFTOPPER



Folding truck bed caps for over fifty models offered in tan, gray and black exist fitting 99% of all pickup trucks on and off the road. Our soft tops expanded into SUVs such as Chevy Blazers, Toyota 4Runners and Ford Broncos. And while we ship Softoppers to every corner of the entire world, all manufacturing and sewing is still done in North America



SCAN TO SEE THE HOTTEST NEW PRODUCTS FROM SOFTOPPER



AUTHORIZED INSTALLER NETWORK

JOIN TODAY!

BESTOP.COM | 800.845.3567

BESTOP IS OFFERING ITS STRONGEST AUTHORIZED INSTALLER NETWORK EVER.

Don't miss the opportunity to grow your customer base and receive more support than ever before. Join over 1,000 Bestop Authorized Installers today!

STAND OUT FROM YOUR COMPETITION

- Membership in the Bestop Authorized Installer network guarantees that you're positioned as a top seller of the industry's best-selling Jeep®, Bronco® and Truck accessories*
- Gain access to the industry's strongest library of selling tools
- Drive local customers to your store
- Maximize the benefits of Bestop's nationwide branding and marketing programs
- Ensure that you have the highest level of Bestop product knowledge, availability and installation services

INCREDIBLE MEMBER BENEFITS*

- Featured listing in the Bestop Authorized Installer Directory and high-traffic 'Find an Installer' pages on Bestop.com
- Access to Bestop Marketing Assets, including photography, video and plug-and-play ads and graphics
- Access to Bestop U. Our online training and installation guides
- Access to Bestop's Sales Boosters - our new featured product program
- Bestop Branding Materials, such as posters, counter signs, promotional support, full-color 6' x 2' Bestop banner, and more
- Access to Bestop Business Development Manager in-person or virtual product knowledge training

DECIDE WHICH PROGRAM LEVEL IS RIGHT FOR YOU	PLATINUM AUTHORIZED INSTALLER	AUTHORIZED INSTALLER
Access to Bestop Digital Marketing Assets	+	+
Access to Sales Booster Program	+	+
Access to Bestop U for online training and installation guides	+	+
Listing on Bestop "Find an Installer" page	+	+
Listings as Bestop Platinum Authorized Installer member on Bestop.com & website link to YOUR website	+	
Grow your local customer base with Bestop Installation Matchmaker	+	
Bestop Showroom Branding Kit (when available)	+	
Receive additional marketing support through direct mail, social media, Platinum Installer locator listing and a PAI door sticker.	+	

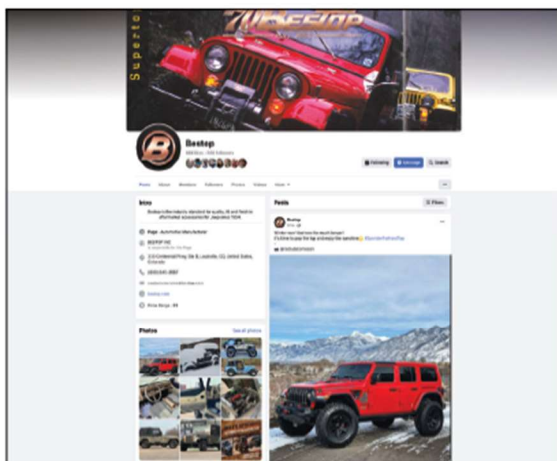
*Program is subject to change.

SIGN UP TODAY!

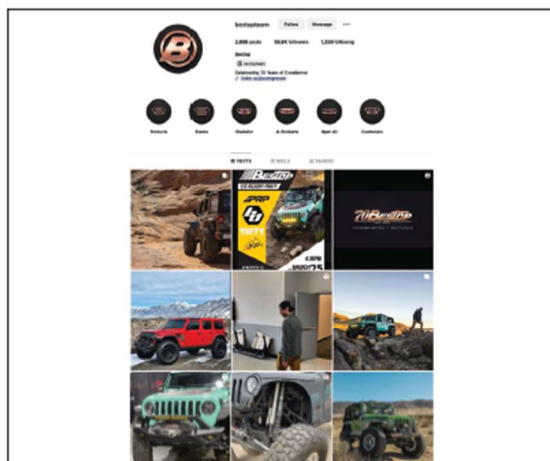
Sign up for the Bestop Authorized Installer Network today. To learn more, go to <https://www.bestop.com/authorized-installer-network/>

* Benefits vary according to Authorized Installer membership level

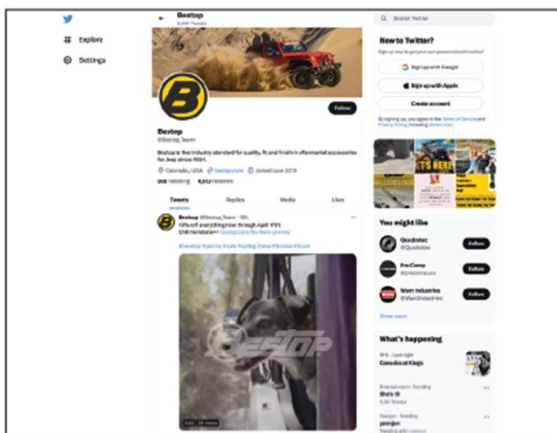
FOLLOW US ON SOCIAL MEDIA



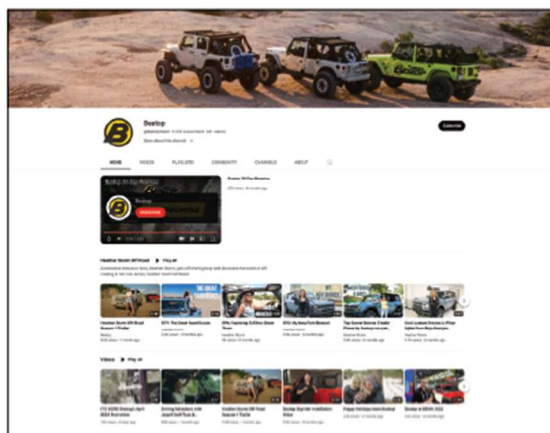
www.facebook.com/BestopTeam



www.instagram.com/bestopteam



twitter.com/bestop_team



www.youtube.com/user/BestopTeam



Find more information on all Bestop® Jeep®, Bronco® and Truck products 24/7 at Bestop.com

Bestop Customer Service is available Monday through Friday from 8am to 4pm, MT

Phone (800) 845-3567 | Fax (303) 464-2702

Email: customerservice@bestop.com

Catalog Part #677.84

© 2025 Bestop®, Inc.

BeltRail, Bestop, Bikini, Duster, Element, Halftop, HOSS, Instatrunk, Replace-A-Top, RoughRider, Sunrider, Supertop, Trekstep, TrailMax, Trektop, Windjammer, WrapAround and circle B logo are trademarks of Bestop, Inc. Chrysler, Dodge, Jeep and RAM are registered trademarks of FCA US LLC. Printed in USA.



BAJADESIGNS.COM



TUFFYPRODUCTS.COM



PRPSEATS.COM



STATUSRACING.COM



SPEEDSTRAP.COM



BULLRING.COM



ALUMINESS.COM



CALIPERCOVERS.COM



4X4SPOD.COM



SOFTOPPER.COM