



Installation Instructions HighRock 4x4™ Element™ Front Door Frame

Vehicle Application:
Jeep® Wrangler 2&4-Door 2007-2018
Part Number 51810/51826

Installation Tips

Before you install your new High Rock 4x4™ Element™ Door Frame, please read all the instructions thoroughly.

WARNING This product is designed primarily to enhance the appearance of the vehicle and to shield the occupants from ordinary weather conditions. Do not rely in any way on the components of this product to protect against injury or death in the event of an accident. Never operate the vehicle in excess of manufacturer's specifications.

Read and follow, precisely, all installation instructions provided when installing this product. Failure to do so may result in a poor fit and could place occupants of the vehicle in a potentially dangerous situation.



WEAR SEAT BELTS AT ALL TIMES

Tools



Safety Glasses



#2 Phillips Screwdriver



3/8" Wrench



3mm & 5mm Allen Wrenches



Ratchet



T40 & T45 Torx Driver

Installation Time



30 Minutes

Support

We're here to help!
Go to www.Bestop.com and click on "Contact Us"

Skill Level



1 - Easy



Installation Instructions HighRock 4x4™ Element™ Front Door Frame

Vehicle Application:
Jeep® Wrangler 2&4-Door 2007-2018
Part Number 51810/51826

Sugerencias de Instalación

Antes de empezar a instalar esta unidad, lea atentamente todas las instrucciones.

Para un buen ajuste:

Para facilitar la instalación, el producto debe instalarse a temperaturas superiores a 72 °F (22 °C).

Por debajo de esta temperatura, la tela puede encogerse una pulgada o más, lo que dificultaría su ajuste al vehículo.

Es normal que la tela se contraiga o arrugue cuando está guardada en la caja de empaque. A los pocos días después de la instalación, la tela se relajará y las arrugas desaparecerán.



ADVERTENCIA

Este producto se diseñó principalmente para mejorar la apariencia del vehículo y proteger a los ocupantes de las condiciones climáticas comunes. De ninguna manera piense que los componentes de este producto pueden servir como medio de contención para los ocupantes del vehículo o que pueden protegerlos contra lesiones o la muerte en caso de accidente. Este producto no protegerá a los ocupantes contra caídas de objetos. Nunca conduzca este vehículo fuera de las especificaciones del fabricante.

USE LOS CINTURONES DE SEGURIDAD EN TODO MOMENTO

Lea y siga con precisión todas las instrucciones de instalación que se proporcionan para instalar este producto. Si no lo hace, podría producirse un mal ajuste que colocaría a los ocupantes del vehículo en una situación potencialmente peligrosa.



PRECAUCIÓN

Debe usar gafas protectoras en todo momento durante la instalación de este producto.

Conseils pour l'installation

Lire toutes les instructions au complet avant de commencer l'installation de cet assemblage.

Pour un ajustement sans problème :

Afin de faciliter l'installation, ce produit doit être installé à des températures au-dessus de 72 °F (22 °C).

Sous cette température, le tissu peut rétrécir d'un pouce (2,5 cm) ou plus, ce qui rendra l'ajustement sur le véhicule difficile.

Il est normal que le tissu rétrécisse et plisse pendant qu'il est dans la boîte d'expédition. En quelques jours après l'installation, le tissu se détendra et les plis disparaîtront.



AVERTISSEMENT

Ce produit est conçu principalement pour améliorer l'apparence du véhicule et pour protéger les occupants des conditions météorologiques usuelles. Ne jamais se fier aux composants de ce produit pour se protéger de blessures ou de la mort en cas d'accident. Ce produit ne protégera pas les occupants des chutes d'objets. Ne jamais utiliser le véhicule au-delà des caractéristiques techniques indiquées par le fabricant.

PORTER UNE CEINTURE DE SÉCURITÉ EN TOUT TEMPS

Lire et suivre, très fidèlement, toutes les instructions d'installation fournies lors de l'installation de ce produit. Ne pas suivre cette consigne peut causer une installation inadéquate et mettre les occupants du véhicule dans une situation potentiellement dangereuse.



MISE EN GARDE

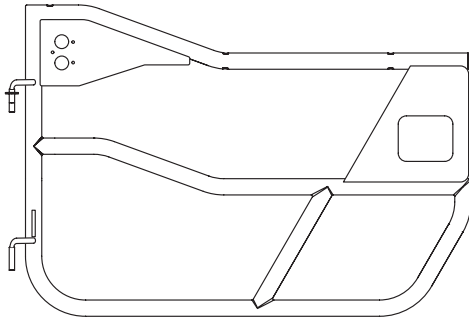
Des lunettes de sécurité doivent être portées en tout temps lors de l'installation de ce produit.



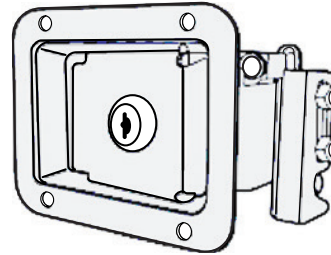
Installation Instructions HighRock 4x4™ Element™ Front Door Frame

Vehicle Application:
Jeep® Wrangler 2&4-Door 2007-2018
Part Number 51810/51826

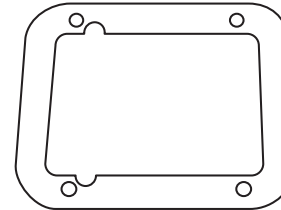
Parts List



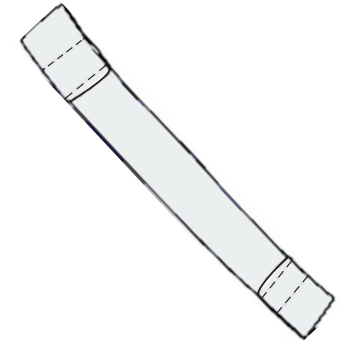
Door Frames
Left (shown) Part #444.37 (gloss) OR #499.49 (matte)
Right #444.36 (gloss) OR #499.50 (matte)
Qty. 1 of each



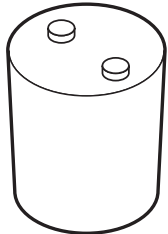
Latch - Rotary Locking Paddle
With Key
Part #459.24 Right
Part #459.25 Left
Qty. 1 of each



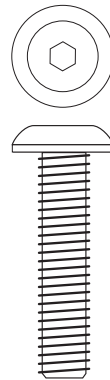
Latch Plate
Part #429.41
Qty. 2



Door Restraint
Part #393.23
Qty. 2



Mirror Mount Bracket
Part #445.91
Qty. 2



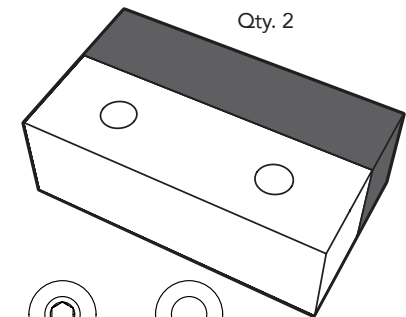
M8x35mm
Button Head Cap Screw
Part #517.83
Qty. 4



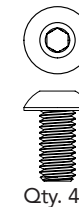
#10-32
Truss Head Machine Screw
Black
Part #316.82
Qty. 8



#10-32
Lock Nut - Black
Part #316.94
Qty. 8



Qty. 2

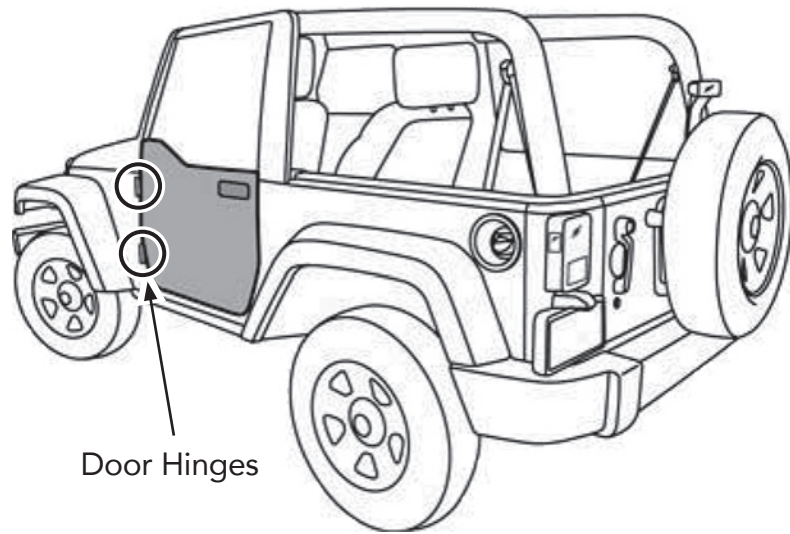


Qty. 4



Qty. 4

Door Latch Bumper Kit
Kit of Parts #565.91
Qty. 1



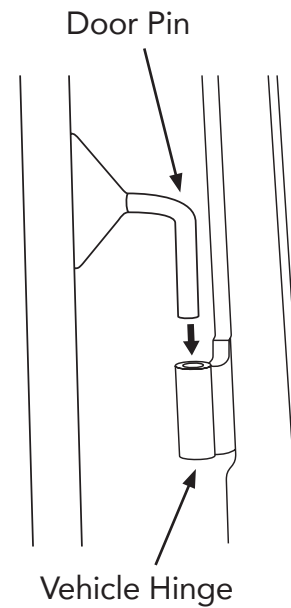
Hold the door straight out from the vehicle with the hinge pins over the body hinges.

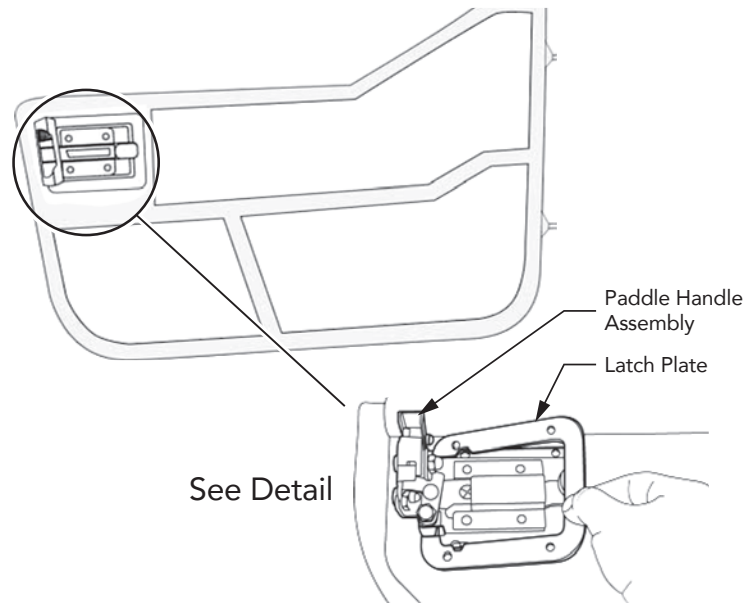
Lower the pins into the hinges.

Make sure that the pins are fully inserted into the body hinges.

See Detail

Detail





Insert the Paddle Handle into the opening in the door plate so that the latch mechanism is inside the vehicle and the Rotary Latch Mechanism #459.24 or #459.25 is toward the rear of the door.

Place the Latch Plate #429.41 over the Paddle Handle on the inside of the door. Align the holes in the Paddle Handle and Latch Plate. Insert four (4) #10-32 Truss Head Machine Screws #316.94 from the outside and secure them with four (4) #10-32 Lock Nuts.

Close the door and adjust the latch to ensure it latches properly.

Tighten the screws once the latch works properly.

Adjust the factory door striker if necessary to ensure the latch engages properly. (See page 6)

Tools

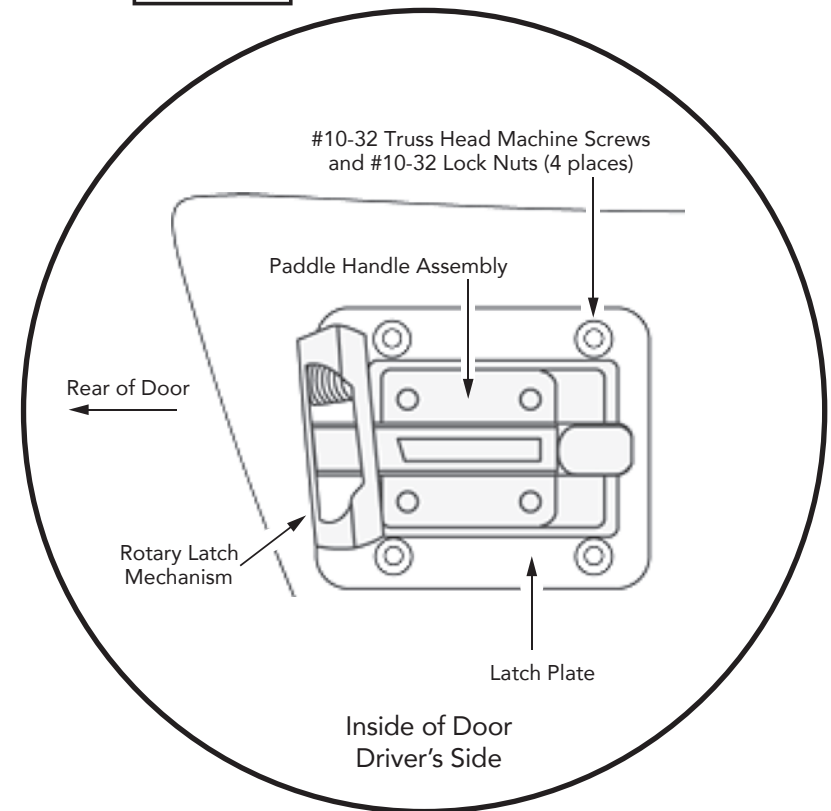


#2 Phillips
Screwdriver



3/8" Wrench

Detail



WARNING

It is important that the Paddle Handle must align correctly with the vehicle manufacturer's original equipment steel latch pin located on the vehicle. Failure to properly install the Paddle Handle may result in the door accidentally opening.

IMPROPER CLOSURE COULD RESULT IN SERIOUS INJURY OR DEATH TO THE OCCUPANTS. WEAR SEAT BELTS AT ALL TIMES. DRIVE CAREFULLY.

Tools



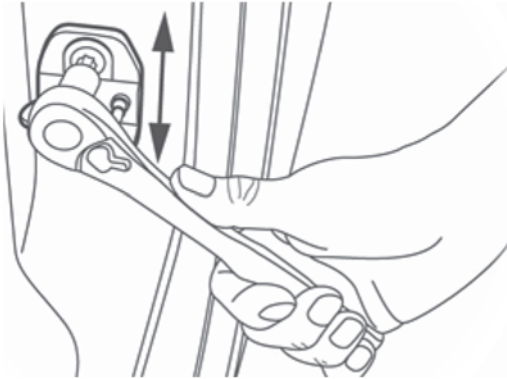
3mm
Allen Wrench



Ratchet



T45
Torx Driver

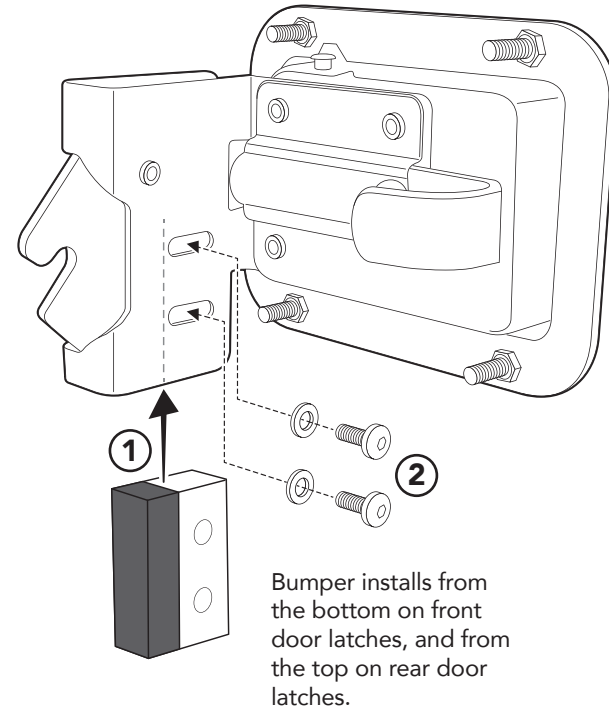


Step 1

If the Element Door does not match up with the door striker, you may adjust the door striker by loosening it with a T-45 Torx wrench and either lowering or raising the door striker.

Tighten the door striker securely after adjusting.

The door striker will have to be put back into its original position when re-installing OEM doors.

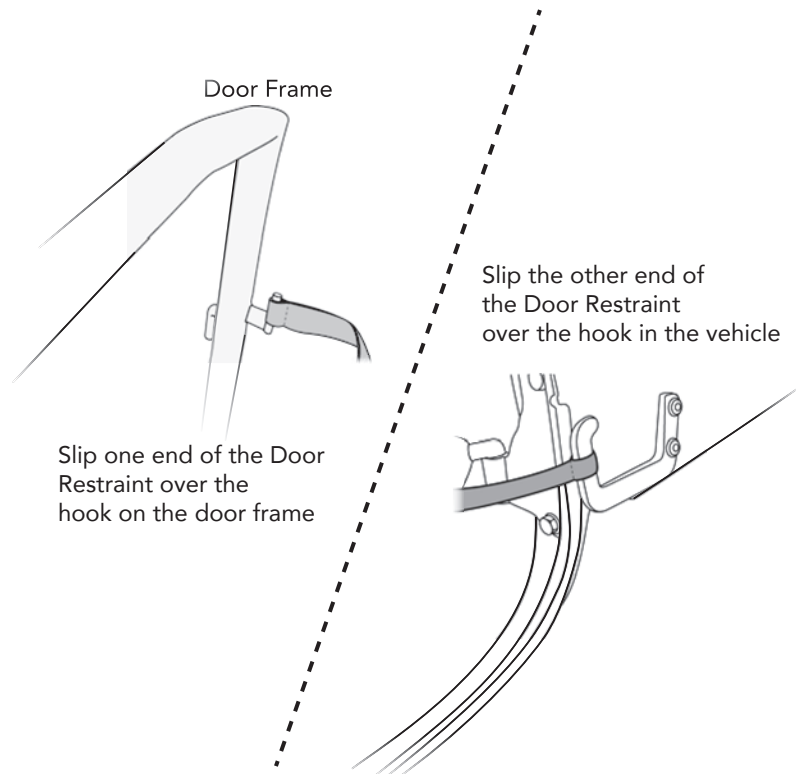


Step 2

Slide the Door Latch Bumper from Parts Kit #565.91 into the Rotary Latch Mechanism. The Bumper will slide in from the bottom of the Latch Mechanism.

Using the 3mm Allen Wrench, secure the bumper with the screws and washers from the Parts Kit #565.91, using two screws and washers on each bumper.

Repeat on both side of the Jeep.



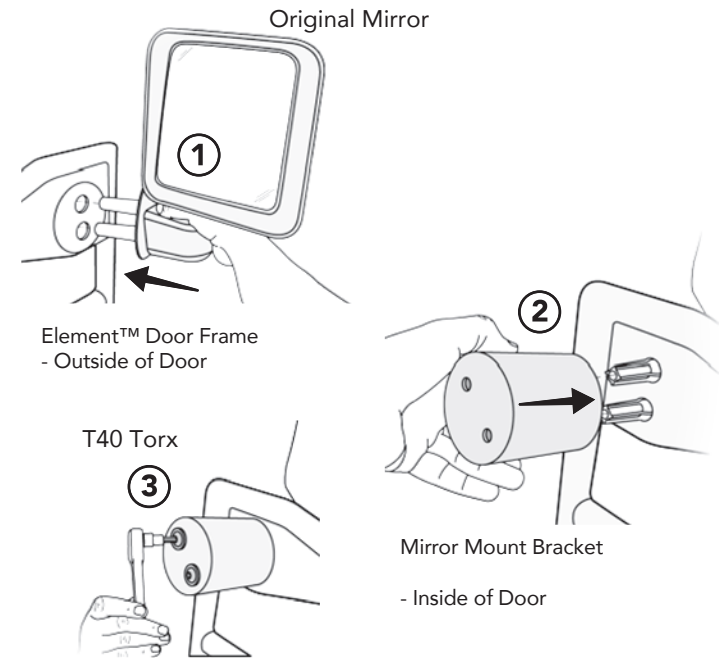
Step 1

Locate the two (2) Door Restraints # 393.23. Slip the loop in one end of a Door Restraint over the hook on the door frame.

Slip the loop in the other end of the Door Restraint over the hook on the vehicle body.

Repeat on both sides of the Jeep.

Tools



Step 2

The mirrors from the original doors can be mounted to the Element™ Door using the Mirror Mount Brackets #445.91.

Use a T40 Torx wrench to remove the mirrors from the factory doors.

Align the holes in a Mirror Mount Bracket with the holes on the inside of the Element™ Door.

Slide the pins on the mirror through the door from the outside into the bracket. Secure using two M8x35mm Button Head Cap Screws #517.83



Care and Maintenance of your Bestop Product

Your Bestop product is made of the finest materials available. To keep it looking new and for the maximum possible wear, it will need periodic cleaning and maintenance.

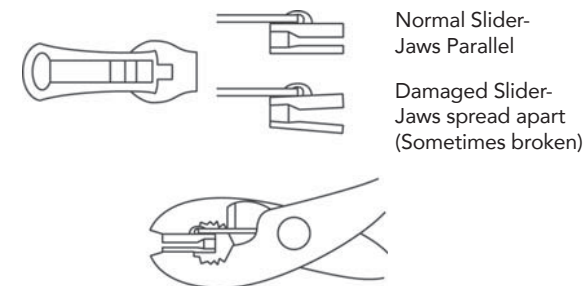
Fabric: The fabric should be washed often using soap, warm water and a soft bristle brush. Rinse with clear water to remove all traces of soap. Bestop recommends using Bestop Cleaner (part no. 11201-00) and Bestop Protectant (part no. 11202-00) for Vinyl fabric and Bestop Twill Protectant (part no. 11207-00) for Twill fabric. Bestop Cleaner and Bestop protectant are specially formulated to provide a total cleaning and protection system. Bestop Cleaner safely removes the toughest stains, will not harm vehicle finishes, is biodegradable and environmentally friendly. Bestop Protectant protects against UV-fading, cracking and hardening, and repels dust, grease, dirt and mildew.

Windows: Keep windows clean to avoid scratching. DO NOT use a brush on the windows! Wash with a water-soaked cloth or sponge and a mild dishwashing detergent. Bestop recommends Bestop Vinyl Window Cleaner (part no. 11203-00), which safely cleans and protects vinyl windows and helps prevent UV damage. NEVER WIPE THE WINDOWS WHEN THEY ARE DRY. Be careful when cleaning snow or frost from the vinyl windows since they are easily scratched and may crack at low temperatures. DO NOT roll the sides or rear window in cold weather. The windows become stiff and will crack. Cracks caused by misuse in cold temperatures are not covered under warranty.

Water: Seeping through at the seams may be stopped by applying 3-M Scotchgard® on the inside of the seams.

Snaps: Keep snaps cleaned and lubricated with silicone to help prevent snaps from sticking to the studs. If a snap does become stuck to a stud, use a screwdriver and GENTLY pry apart to prevent permanent damage to the snap or the top fabric.

Zippers: Keeping zippers cleaned and lubricated with Bestop's Zipper Cleaner (part no. 11206-00) will help prevent damage and keep the zippers in smooth working condition. If a zipper opens behind the slider, the slider may have been spread apart. This problem can usually be repaired by using an ordinary pair of pliers to bring the sides back into parallel. Return slider to the end of the zipper in the normal Open position. Squeeze lightly at first and test the zipper. If the zipper continues to remain open squeeze more firmly with the pliers and try the zipper again. Repeat this procedure until the zipper operates correctly.



For Bestop Warranty Information, Please go to;

<https://www.bestop.com/help/warranty-information/>

